

## Product datasheet for **TA319851**

### ATP11A Rabbit Polyclonal Antibody

#### Product data:

**Product Type:** Primary Antibodies

**Applications:** IF, WB

**Recommended Dilution:** WB: 1 ug/mL, ICC: 10 ug/mL, IF: 20 ug/mL

**Reactivity:** Human, Mouse, Rat

**Host:** Rabbit

**Isotype:** IgG

**Clonality:** Polyclonal

**Immunogen:** ATP11A antibody was raised against a 19 amino acid synthetic peptide near the amino terminus of human ATP11A.

**Formulation:** ATP11A Antibody is supplied in PBS containing 0.02% sodium azide.

**Concentration:** 1ug/ul

**Purification:** ATP11A Antibody is affinity chromatography purified via peptide column.

**Conjugation:** Unconjugated

**Storage:** Store at -20°C as received.

**Stability:** Stable for 12 months from date of receipt.

**Gene Name:** ATPase phospholipid transporting 11A

**Database Link:** [NP\\_115565](#)  
[Entrez Gene 23250 Human](#)  
[P98196](#)

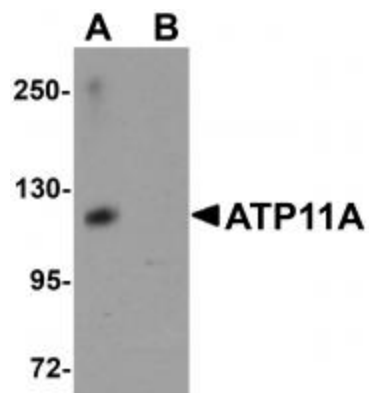
**Background:** ATP11A Antibody: ATP11A is a widely expressed integral membrane ATPase. ATP11A is probably phosphorylated in its intermediate state and likely drives the transport of ions such as calcium or other molecules across membranes. While the exact molecule ATP11A transports is unknown, increased expression of ATP11A mRNA has been observed in murine leukemia cells made resistant to anti-cancer drugs such as farnesyltransferase inhibitors (FTIs). Furthermore, overexpression of ATP11A provided protection against the FTI SCH66336 while knockdown of ATP11A via siRNA made cells more sensitive to this drug. Other reports suggest that elevated levels of ATP11A mRNA may also be a predictive marker of metastasis in colorectal cancer patients.



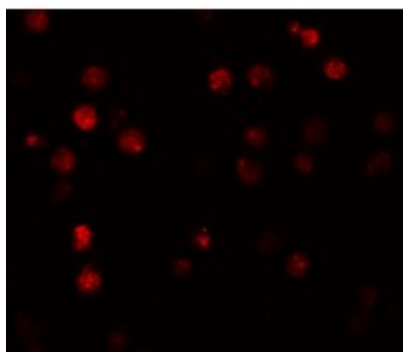
[View online »](#)

Synonyms: ATP1H; ATPIS

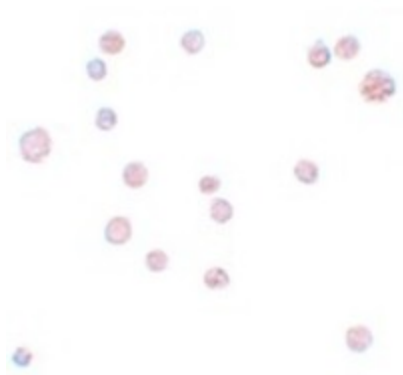
### Product images:



Western blot analysis of ATP11A in K562 cell tissue lysate with ATP11A antibody at 1 ug/mL in (A) the absence and (B) the presence of blocking peptide.



Immunofluorescence of ATP11A in K562 cells with ATP11A antibody at 20 ug/mL.



Immunocytochemistry of ATP11A in K562 cells with ATP11A antibody at 10 ug/mL.