

Product datasheet for **TA319850**

PHLPP (PHLPP1) Rabbit Polyclonal Antibody

Product data:

Product Type:	Primary Antibodies
Applications:	IF, WB
Recommended Dilution:	WB: 1 - 2 ug/mL
Reactivity:	Human
Host:	Rabbit
Isotype:	IgG
Clonality:	Polyclonal
Immunogen:	PHLPP1 antibody was raised against an 18 amino acid synthetic peptide near the amino terminus of human PHLPP1.
Formulation:	PHLPP1 Antibody is supplied in PBS containing 0.02% sodium azide.
Concentration:	1 mg/ml
Purification:	PHLPP1 Antibody is affinity chromatography purified via peptide column.
Conjugation:	Unconjugated
Storage:	Store at -20°C as received.
Stability:	Stable for 12 months from date of receipt.
Predicted Protein Size:	189 kDa
Gene Name:	PH domain and leucine rich repeat protein phosphatase 1
Database Link:	NP_919431 Entrez Gene 23239 Human O60346



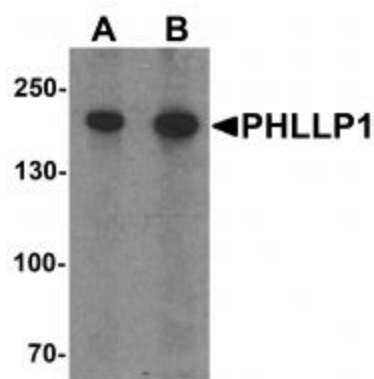
[View online »](#)

Background:

PHLPP1 Antibody: PHLPP1 is a member of the serine/threonine phosphatase family, which are important regulators of Akt serine-threonine kinases (AKT1, AKT2, AKT3) and conventional/novel protein kinase C (PKC) isoforms. PHLPP1 and PHLPP2 have a similar domain structure and have been shown to dephosphorylate and inactivate, distinct Akt isoforms, at one of the two critical phosphorylation sites required for activation: Serine473. PHLPP2 dephosphorylates AKT1 and AKT3, whereas PHLPP1 is specific for AKT2 and AKT3. PHLPP1 promotes apoptosis and may act as a tumor suppressor. Increased expression of PHLPP1 may also play a role in obesity and type 2 diabetes by interfering with Akt-mediated insulin signaling.

Synonyms:

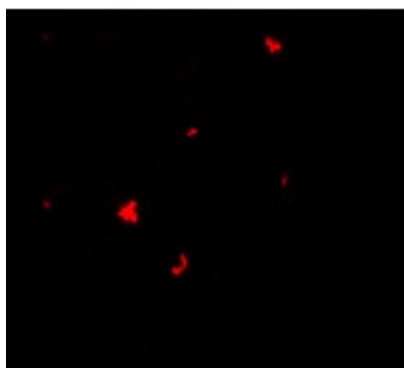
PHLPP; PLEKHE1; PPM3A; SCOP

Product images:

Western blot analysis of PHLPP1 in SW480 cell lysate with PHLPP1 antibody at (A) 1 and (B) 2 ug/mL.



Immunocytochemistry of PHLPP1 in SW480 cells with PHLPP1 antibody at 2.5 ug/mL.



Immunofluorescence of PHLPP1 in SW480 cells with PHLPP1 antibody at 5 ug/mL.