

## Product datasheet for **TA319849**

### **Snf1k2 (SIK2) Rabbit Polyclonal Antibody**

#### **Product data:**

<b>Product Type:</b>	Primary Antibodies
<b>Applications:</b>	IF, WB
<b>Recommended Dilution:</b>	WB: 1 ug/mL
<b>Reactivity:</b>	Human, Mouse, Rat
<b>Host:</b>	Rabbit
<b>Isotype:</b>	IgG
<b>Clonality:</b>	Polyclonal
<b>Immunogen:</b>	SIK2 antibody was raised against a 16 amino acid synthetic peptide near the center of human SIK2.
<b>Formulation:</b>	SIK2 Antibody is supplied in PBS containing 0.02% sodium azide.
<b>Concentration:</b>	1 mg/ml
<b>Purification:</b>	SIK2 Antibody is affinity chromatography purified via peptide column.
<b>Conjugation:</b>	Unconjugated
<b>Storage:</b>	Store at -20°C as received.
<b>Stability:</b>	Stable for 12 months from date of receipt.
<b>Gene Name:</b>	salt inducible kinase 2
<b>Database Link:</b>	<a href="#">NP_056006</a> <a href="#">Entrez Gene 235344 Mouse</a> <a href="#">Entrez Gene 315649 Rat</a> <a href="#">Entrez Gene 23235 Human</a> <a href="#">Q9H0K1</a>

**Background:** SIK2 Antibody: Salt-inducible kinase 2 (SIK2), like its closely related homolog SIK1, belongs AMPK subfamily of the Ser/Thr protein kinase family and negatively regulates CRE-binding protein (CREB) activity by phosphorylating the CREB-specific coactivator transducer of regulated CREB activity (TORC). SIK2 is thought to be part of a signaling cascade that regulates the expression and activity of the insulin-induced genes PGC-1 alpha and UCP-1 in brown adipocytes, impairment of which has been implicated in obesity and insulin resistance in human and animal models. SIK2 has also been reported as a key regulator for neuronal survival after ischemia, suppressing CREB-mediated gene expression after oxygen-glucose deprivation.

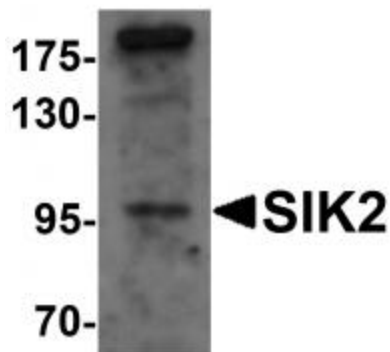


[View online »](#)

Synonyms: LOH11CR11; QIK; SIK-2; SNF1LK2

Protein Families: Druggable Genome, Protein Kinase

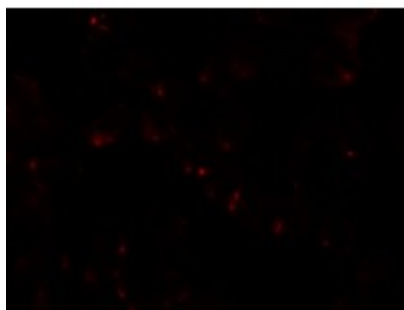
### Product images:



Western blot analysis of SIK2 in SW480 cell lysate with SIK2 antibody at 1 ug/mL.



Immunocytochemistry of SIK2 in SW480 cells with SIK2 antibody at 2.5 ug/mL.



Immunofluorescence of SIK2 in SW480 cells with SIK2 antibody at 5 ug/mL.