

## Product datasheet for **TA319848**

### ATP11B Rabbit Polyclonal Antibody

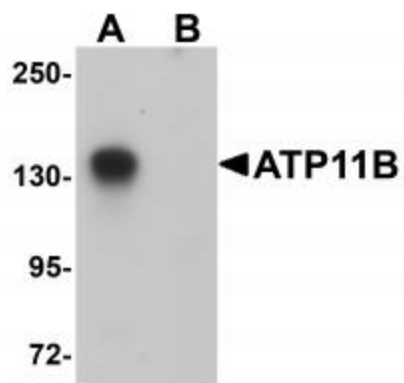
#### Product data:

Product Type:	Primary Antibodies
Applications:	IF, WB
Recommended Dilution:	WB: 1 ug/mL, ICC: 10 ug/mL, IF: 20 ug/mL
Reactivity:	Human, Mouse
Host:	Rabbit
Isotype:	IgG
Clonality:	Polyclonal
Immunogen:	ATP11B antibody was raised against a 19 amino acid synthetic peptide near the amino terminus of human ATP11B.
Formulation:	ATP11B Antibody is supplied in PBS containing 0.02% sodium azide.
Concentration:	1ug/ul
Purification:	ATP11B Antibody is affinity chromatography purified via peptide column.
Conjugation:	Unconjugated
Storage:	Store at -20°C as received.
Stability:	Stable for 12 months from date of receipt.
Gene Name:	ATPase phospholipid transporting 11B (putative)
Database Link:	<a href="#">NP_055431</a> <a href="#">Entrez Gene 76295 Mouse</a> <a href="#">Entrez Gene 23200 Human</a> <a href="#">Q9Y2G3</a>
Background:	ATP11B Antibody: ATP11B is a widely expressed integral membrane ATPase and is thought to drive the transport of phospholipids across membranes. It has been suggested that ATP11B is hormonally regulated and plays a role in the subnuclear trafficking of transcription factors with RING motifs. While the exact molecule ATP11B transports is unknown, increased mRNA expression of the homologous ATP11A has been observed in cells resistant to anti-cancer drugs such as farnesyltransferase inhibitors (FTIs), suggesting that ATP11B may also play a role in cell survival under harsh conditions.
Synonyms:	ATPIF; ATPIR
Protein Families:	Transmembrane

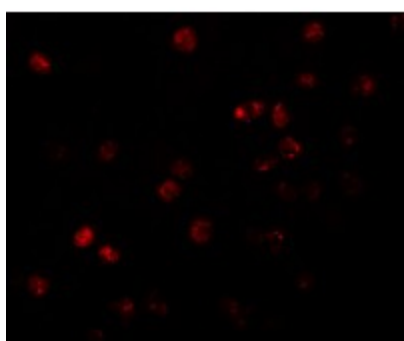


[View online »](#)

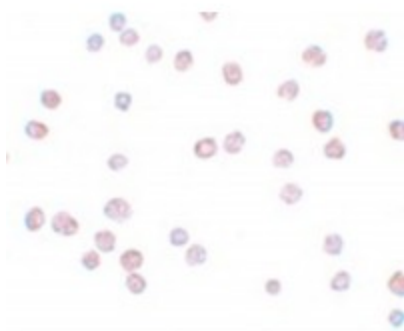
## Product images:



Western blot analysis of ATP11B in K562 cell tissue lysate with ATP11B antibody at 1 ug/mL in (A) the absence and (B) the presence of blocking peptide.



Immunofluorescence of ATP11B in K562 cells with ATP11B antibody at 20 ug/mL.



Immunocytochemistry of ATP11B in K562 cells with ATP11B antibody at 10 ug/mL.