

## Product datasheet for **TA319847**

### **ANKRD15 (KANK1) Rabbit Polyclonal Antibody**

#### **Product data:**

<b>Product Type:</b>	Primary Antibodies
<b>Applications:</b>	IF, IHC, WB
<b>Recommended Dilution:</b>	WB: 1 ug/mL
<b>Reactivity:</b>	Human, Mouse
<b>Host:</b>	Rabbit
<b>Isotype:</b>	IgG
<b>Clonality:</b>	Polyclonal
<b>Immunogen:</b>	KANK1 antibody was raised against a 19 amino acid peptide near the amino terminus of human KANK1 .
<b>Formulation:</b>	KANK1 Antibody is supplied in PBS containing 0.02% sodium azide.
<b>Concentration:</b>	1ug/ul
<b>Purification:</b>	KANK1 Antibody is affinity chromatography purified via peptide column.
<b>Conjugation:</b>	Unconjugated
<b>Storage:</b>	Antibody can be stored at 4°C up to one year. Antibodies should not be exposed to prolonged high temperatures.
<b>Stability:</b>	Stable for 12 months from date of receipt.
<b>Predicted Protein Size:</b>	Predicted: 149 kDa; Observed: 150 kDa
<b>Gene Name:</b>	KN motif and ankyrin repeat domains 1
<b>Database Link:</b>	<a href="#">NP_055973</a> <a href="#">Entrez Gene 23189 Human</a> <a href="#">Q14678</a>



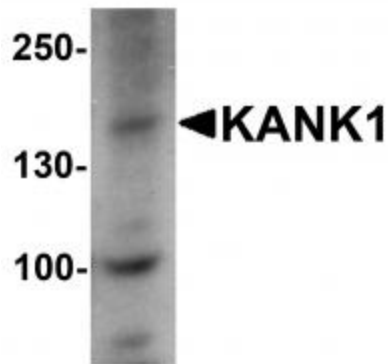
[View online »](#)

**Background:**

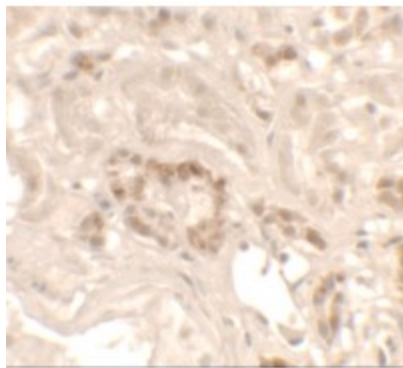
KANK1 Antibody: Ankyrins are membrane adaptor molecules that play important roles in the control of cytoskeleton formation by regulating actin polymerization. KANK1 (KN motif and ankyrin repeat domain-containing protein 1), also known as ANKRD15, is a 1,352 amino acid protein that contains at least 12 exons and 5 ANK repeats. It binds to beta-catenin and regulates its subcellular distribution. KANK1 is ubiquitously expressed and localizes to cytoplasm. It may function as a tumor suppressor for renal cell carcinoma. Mutations in this gene cause cerebral palsy spastic quadriplegic type 2, a central nervous system development disorder.

**Synonyms:**

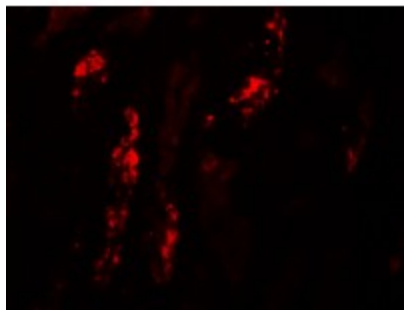
ANKRD15; CPSQ2; KANK

**Product images:**

Western blot analysis of KANK1 in 3T3 cell lysate with KANK1 antibody at 1 ug/mL.



Immunohistochemistry of KANK1 in human kidney tissue with KANK1 antibody at 2.5 ug/mL.



Immunofluorescence of KANK1 in human kidney tissue with KANK1 antibody at 20 ug/mL.