

Product datasheet for **TA319846**

Lipin 1 (LPIN1) Rabbit Polyclonal Antibody

Product data:

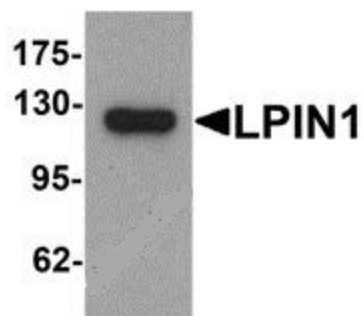
Product Type:	Primary Antibodies
Applications:	IF, IHC, WB
Recommended Dilution:	WB: 1 - 2 ug/mL
Reactivity:	Human, Mouse, Rat
Host:	Rabbit
Isotype:	IgG
Clonality:	Polyclonal
Immunogen:	LPIN1 antibody was raised against an 18 amino acid peptide near the carboxy terminus of human LPIN1.
Formulation:	LPIN Antibody is supplied in PBS containing 0.02% sodium azide.
Concentration:	1ug/ul
Purification:	LPIN1 Antibody is affinity chromatography purified via peptide column.
Conjugation:	Unconjugated
Storage:	Store at -20°C as received.
Stability:	Stable for 12 months from date of receipt.
Predicted Protein Size:	Predicted: 107 kDa; Observed: 125 kDa
Gene Name:	lipin 1
Database Link:	NP_001248357 Entrez Gene 23175 Human Q14693
Background:	LPIN1 Antibody: LPIN1, also known as PAP1, is a magnesium-ion-dependent phosphatidic acid phosphohydrolase enzyme that catalyzes the penultimate step in triglyceride synthesis including the dephosphorylation of phosphatidic acid to yield diacylglycerol (reviewed in 1). LPIN1 is required for adipocyte differentiation and it also functions as a nuclear transcriptional coactivator with some peroxisome proliferator-activated receptors to modulate expression of other genes involved in lipid metabolism (1,2). Mutations in LPIN1 are associated with metabolic diseases such as type 2 diabetes and recurrent acute myoglobinuria (3,4) and it is also a candidate for several human lipodystrophy syndromes (5).



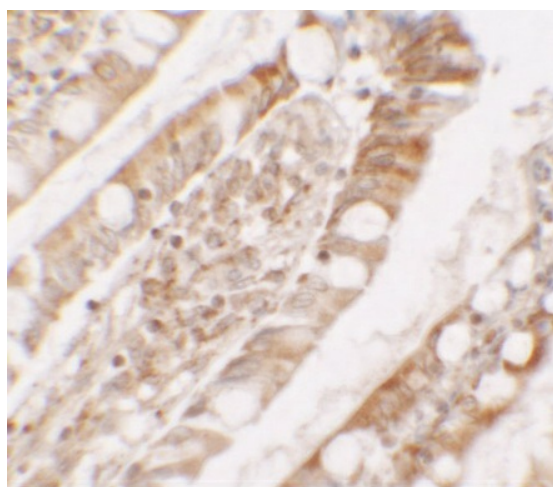
[View online »](#)

Synonyms: PAP1

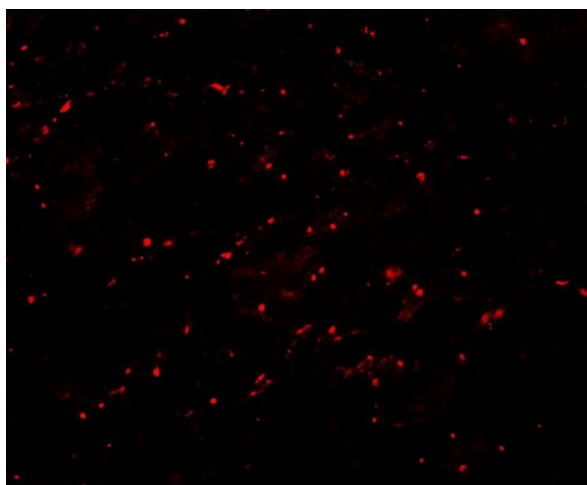
Product images:



Western blot analysis of LPIN1 in K562 cell lysate with LPIN1 antibody at 1 ug/mL.



Immunohistochemistry of LPIN1 in human small intestine tissue with LPIN1 antibody at 5 ug/mL.



Immunofluorescence of LPIN1 in human small intestine tissue with LPIN1 antibody at 20 ug/mL.