

Product datasheet for **TA319845**

ANKLE2 Chicken Polyclonal Antibody

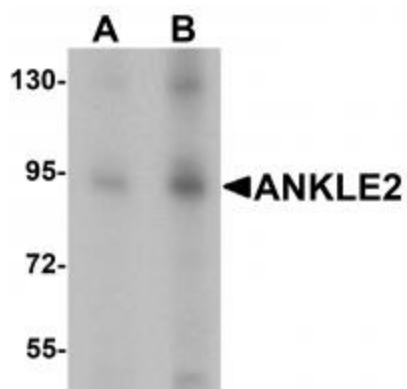
Product data:

Product Type:	Primary Antibodies
Applications:	WB
Recommended Dilution:	WB: 1 - 2 ug/mL
Reactivity:	Human, Mouse, Rat
Host:	Chicken
Isotype:	IgY
Clonality:	Polyclonal
Immunogen:	ANKLE2 antibody was raised against a 19 amino acid synthetic peptide near the center of human ANKLE2.
Formulation:	ANKLE2 Antibody is supplied in PBS containing 0.02% sodium azide.
Concentration:	1ug/ul
Purification:	ANKLE2 Antibody is affinity chromatography purified via peptide column.
Conjugation:	Unconjugated
Storage:	Store at -20°C as received.
Stability:	Stable for 12 months from date of receipt.
Gene Name:	ankyrin repeat and LEM domain containing 2
Database Link:	AAH43157 Entrez Gene 23141 Human Q86XL3
Background:	ANKLE2 Antibody: Ankyrins are membrane adaptor molecules that play important roles in coupling integral membrane proteins to the spectrin-based cytoskeleton network. ANKLE2 (Ankyrin repeat and LEM domain containing 2) is a member of ankyrin repeat and LEM domain containing family. It is a potential single-pass membrane protein that contains three ankyrin repeats and a Lem domain. Ankyrin repeats mediate protein-protein interactions and are among the most common structural motifs in known proteins. The function of this protein is still under investigation.
Synonyms:	KIAA0692; Lem4; LEMD7; MCPH16



[View online »](#)

Product images:



Western blot analysis of ANKLE2 in SW480 cell lysate with ANKLE2 antibody at (A) 1 and (B) 2 ug/mL.