

Product datasheet for **TA319843**

TAB2 Rabbit Polyclonal Antibody

Product data:

Product Type:	Primary Antibodies
Applications:	IHC
Recommended Dilution:	IHC: 5 ug/mL
Reactivity:	Human
Host:	Rabbit
Isotype:	IgG
Clonality:	Polyclonal
Immunogen:	TAB2 antibody was raised against a 14 amino acid synthetic peptide near the carboxy terminus of human TAB2.
Formulation:	TAB2 Antibody is supplied in PBS containing 0.02% sodium azide.
Concentration:	1ug/ul
Purification:	TAB2 Antibody is affinity chromatography purified via peptide column.
Conjugation:	Unconjugated
Storage:	Store at -20°C as received.
Stability:	Stable for 12 months from date of receipt.
Gene Name:	TGF-beta activated kinase 1/MAP3K7 binding protein 2
Database Link:	NP_055908 Entrez Gene 23118 Human Q9NYJ8



[View online »](#)

Background:

TAB2 Antibody: TAB2 is an activator of MAP3K7/TAK1, which is required for for the IL-1 induced activation NF-kappaB and MAPK8/JNK. This protein forms a kinase complex with TRAF6, MAP3K7 and TAB1, thus serves as an adaptor linking MAP3K7 and TRAF6. This protein, TAB1, and MAP3K7 also participate in the signal transduction induced by TNFSF11/RANKL through the activation of the receptor activator of NF-kappaB (TNFRSF11A/RANK), which may regulate the development and function of osteoclasts. Recent experiments have shown that TAB2 and the related protein TAB3 constitutively interact with the autophagy mediator Beclin-1; upon induction of autophagy, these proteins dissociate from Beclin-1 and bind TAK1. Overexpression of TAB2 and TAB3 inhibit autophagy, while their depletion triggers it, suggesting that TAB2 and TAB3 act as a control point for autophagy.

Synonyms:

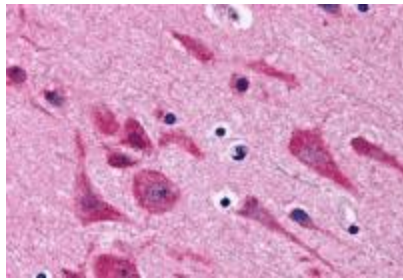
CHTD2; MAP3K7IP2; TAB-2

Protein Families:

Druggable Genome

Protein Pathways:

MAPK signaling pathway, NOD-like receptor signaling pathway, Toll-like receptor signaling pathway

Product images:

Immunohistochemistry of TAB2 in human brain tissue with TAB2 antibody at 5 ug/mL.