

Product datasheet for **TA319842**

KIAA0701 (UHRF1BP1L) Rabbit Polyclonal Antibody

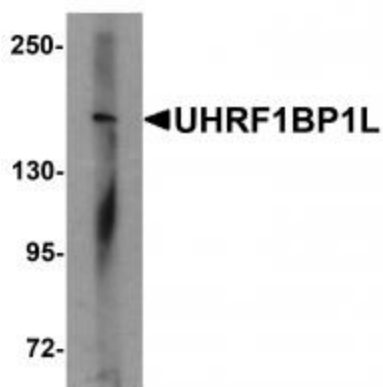
Product data:

Product Type:	Primary Antibodies
Applications:	IF, IHC, WB
Recommended Dilution:	WB: 1 ug/mL, ICC: 2.5 ug/mL, IF: 20 ug/mL
Reactivity:	Human, Mouse
Host:	Rabbit
Isotype:	IgG
Clonality:	Polyclonal
Immunogen:	UHRF1BP1L antibody was raised against a 17 amino acid synthetic peptide near the center of human UHRF1BP1L.
Formulation:	UHRF1BP1L Antibody is supplied in PBS containing 0.02% sodium azide.
Concentration:	1ug/ul
Purification:	UHRF1BP1L Antibody is affinity chromatography purified via peptide column.
Conjugation:	Unconjugated
Storage:	Store at -20°C as received.
Stability:	Stable for 12 months from date of receipt.
Gene Name:	UHRF1 binding protein 1 like
Database Link:	NP_055869 Entrez Gene 75089 Mouse Entrez Gene 23074 Human A0JNW5
Background:	UHRF1BP1L Antibody: The Ubiquitin-like containing PHD and RING finger domains 1-binding protein 1-like (UHRF1BP1L) is closely related to UHRF1BP1, also known as ICBP90, a transcription and cell cycle regulator that specifically binds to the histone H3 N-terminal tail. While little is known of UHRF1BP1L, UHRF1BP1 is required for proper heterochromatin formation in mammalian cells. Furthermore, UHRF1BP1 is thought to be a pivotal target for the ERK1/2 signaling pathway to control the proliferation of Jurkat T cells, suggesting that UHRF1BP1L may also be involved in chromatin regulation and cell proliferation.
Synonyms:	SHIP164

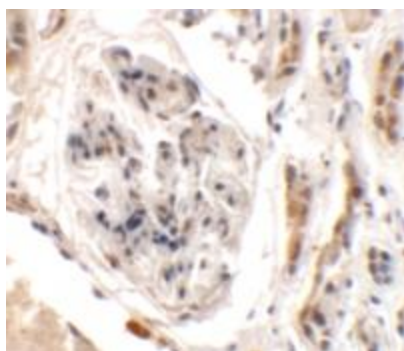


[View online »](#)

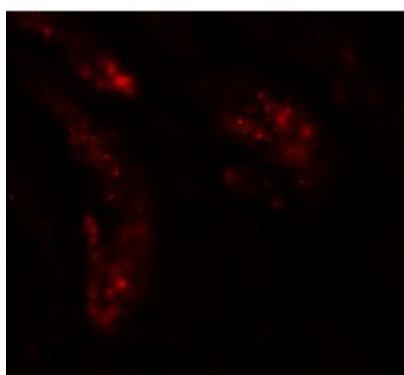
Product images:



Western blot analysis of UHRF1BP1L in mouse brain tissue lysate with UHRF1BP1L antibody at 1 ug/mL



Immunohistochemistry of UHRF1BP1L in human kidney tissue with UHRF1BP1L antibody at 2.5 ug/mL.



Immunofluorescence of UHRF1BP1L in human kidney tissue with UHRF1BP1L antibody at 20 ug/mL.