

Product datasheet for **TA319841**

MYT1L Rabbit Polyclonal Antibody

Product data:

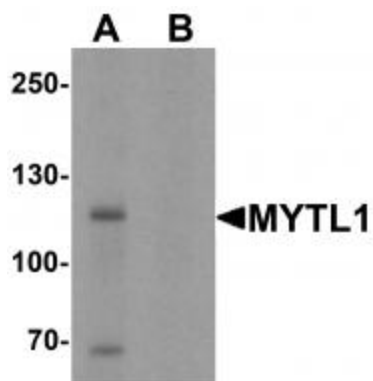
Product Type:	Primary Antibodies
Applications:	IF, WB
Recommended Dilution:	WB: 1 - 2 ug/mL, IF: 20 ug/mL
Reactivity:	Human, Mouse, Rat
Host:	Rabbit
Isotype:	IgG
Clonality:	Polyclonal
Immunogen:	Rabbit polyclonal MYT1L antibody was raised against an 18 amino acid peptide near the carboxy terminus of human MYT1L.
Formulation:	MYT1L Antibody is supplied in PBS containing 0.02% sodium azide.
Concentration:	1ug/ul
Purification:	MYT1L Antibody is affinity chromatography purified via peptide column.
Conjugation:	Unconjugated
Storage:	Store at -20°C as received.
Stability:	Stable for 12 months from date of receipt.
Predicted Protein Size:	130 kDa
Gene Name:	myelin transcription factor 1 like
Database Link:	NP_055840 Entrez Gene 17933 MouseEntrez Gene 116668 RatEntrez Gene 23040 Human Q9UL68
Background:	MYT1L Antibody: The myelin transcription factor 1 family, to which the myelin transcription factor 1-like protein (MYT1L) belongs, is expressed primarily in the developing central nervous system and recruits histone deacetylase (HDAC) to regulate neural transcription. Both MYT1L and the related protein MYT1 interact with SIN3B, a protein that mediates transcriptional repression by binding to HDACs, suggesting that the MYT1 family favor the silencing of genes during neural development. Recent studies suggest that polymorphisms of MYT1L may be associated with schizophrenia.
Synonyms:	MRD39; myT1-L; NZF1; ZC2H2C2; ZC2HC4B



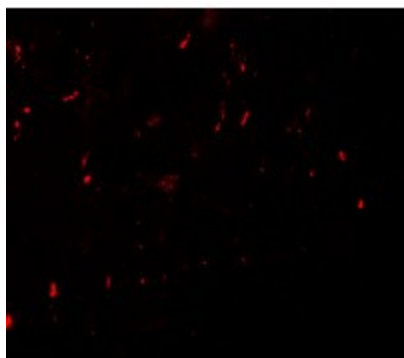
[View online »](#)

Protein Families: Transcription Factors

Product images:



Western blot analysis of MYT1L in mouse brain tissue lysate with MYT1L antibody at 1 ug/mL in (A) the absence and (B) the presence of blocking peptide.



Immunofluorescence of MYT1L in human brain with MYT1L antibody at 20 ug/mL.