

Product datasheet for **TA319840**

PHLPP2 Rabbit Polyclonal Antibody

Product data:

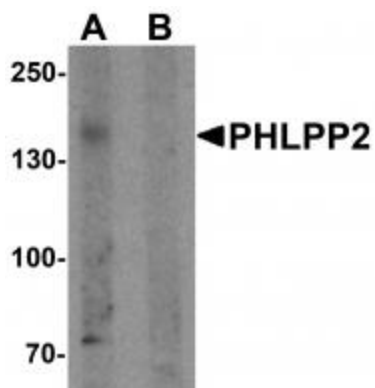
Product Type:	Primary Antibodies
Applications:	IF, WB
Recommended Dilution:	WB: 1 ug/mL
Reactivity:	Human
Host:	Rabbit
Isotype:	IgG
Clonality:	Polyclonal
Immunogen:	PHLPP2 antibody was raised against a 20 amino acid synthetic peptide near the carboxy terminus of human PHLPP2.
Formulation:	PHLPP2 Antibody is supplied in PBS containing 0.02% sodium azide.
Concentration:	1 mg/ml
Purification:	PHLPP2 Antibody is affinity chromatography purified via peptide column.
Conjugation:	Unconjugated
Storage:	Store at -20°C as received.
Stability:	Stable for 12 months from date of receipt.
Predicted Protein Size:	156 kDa
Gene Name:	PH domain and leucine rich repeat protein phosphatase 2
Database Link:	NP_055835 Entrez Gene 23035 Human Q6ZVD8
Background:	PHLPP2 Antibody: PHLPP2 is a member of the serine/threonine phosphatase family, which are important regulators of Akt serine-threonine kinases (AKT1, AKT2, AKT3) and conventional/novel protein kinase C (PKC) isoforms. PHLPP1 and PHLPP2 have a similar domain structure and have been shown to dephosphorylate and inactivate, distinct Akt isoforms, at one of the two critical phosphorylation sites required for activation: Serine473. PHLPP2 dephosphorylates AKT1 and AKT3, whereas PHLPP1 is specific for AKT2 and AKT3. PHLPP1 promotes apoptosis and may act as a tumor suppressor. PHLPP2 associates with and is inhibited by adenylyl cyclase type 6 (AC6), thereby allowing Akt activation.



[View online »](#)

Synonyms: PHLPL; PPM3B

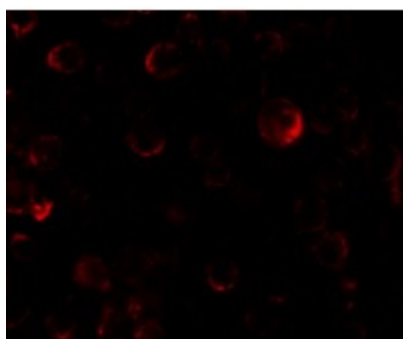
Product images:



Western blot analysis of PHLPP2 in SW480 cell lysate with PHLPP2 antibody at 1 ug/ml in (A) the presence and (B) the absence of blocking peptide.



Immunocytochemistry of PHLPP2 in SW480 cells with PHLPP2 antibody at 2.5 ug/mL.



Immunofluorescence of PHLPP2 in SW480 cells with PHLPP2 antibody at 5 ug/mL.