

Product datasheet for **TA319839**

DIS3 Rabbit Polyclonal Antibody

Product data:

Product Type:	Primary Antibodies
Applications:	IF, IHC, WB
Recommended Dilution:	WB: 1 - 2 ug/mL
Reactivity:	Human, Mouse, Rat
Host:	Rabbit
Isotype:	IgG
Clonality:	Polyclonal
Immunogen:	DIS3 antibody was raised against an 18 amino acid peptide near the amino terminus of human DIS3.
Formulation:	DIS3 Antibody is supplied in PBS containing 0.02% sodium azide.
Concentration:	1ug/ul
Purification:	DIS3 Antibody is affinity chromatography purified via peptide column.
Conjugation:	Unconjugated
Storage:	Store at -20°C as received.
Stability:	Stable for 12 months from date of receipt.
Predicted Protein Size:	Predicted: 105 kDa; Observed: 103 kDa
Gene Name:	DIS3 homolog, exosome endoribonuclease and 3'-5' exoribonuclease
Database Link:	NP_055768 Entrez Gene 72662 Mouse Entrez Gene 306103 Rat Entrez Gene 22894 Human Q9Y2L1
Background:	DIS3 Antibody: The exosome is involved in a multitude of cellular RNA processing and degradation events. DIS3, also known as exosome complex exonuclease RRP44, is a ribonuclease that acts directly in the processing, turnover, and surveillance of a large number of distinct RNA species. DIS3 localizes to both the cytoplasm and the nucleus and contains one PINc domain. It is widely expressed with highest expression in testis and is required for processing of 7S pre-RNA into a mature nuclear complex and, ultimately, for proper mitotic progression. Abnormal expression levels of DIS3 may be associated with colon cancer, suggesting a role for DIS3 in tumorigenesis.

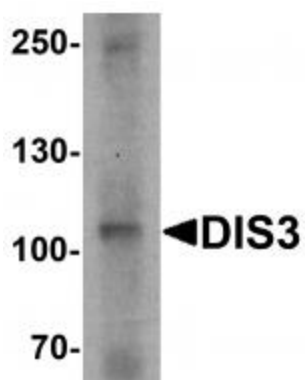


[View online »](#)

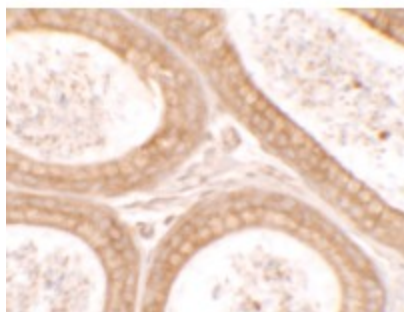
Synonyms: 2810028N01Rik; dis3p; EXOSC11; KIAA1008; RRP44

Protein Pathways: RNA degradation

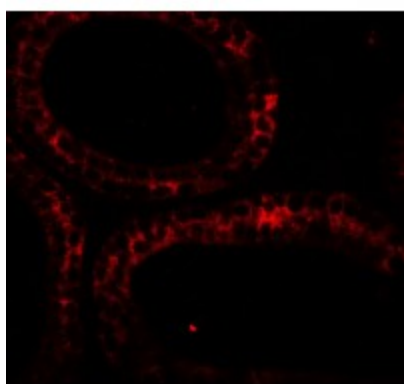
Product images:



Western blot analysis of DIS3 in human ovary tissue lysate with DIS3 antibody at 1 ug/mL.



Immunohistochemistry of DIS3 in mouse testis tissue with DIS3 antibody at 2.5 ug/mL.



Immunofluorescence of DIS3 in mouse testis tissue with DIS3 antibody at 20 ug/mL.