

## Product datasheet for **TA319835**

### Synaptopodin (SYNPO) Rabbit Polyclonal Antibody

#### Product data:

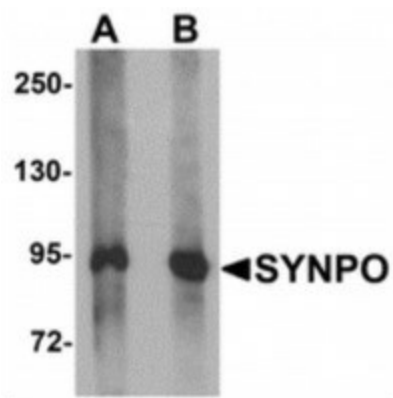
Product Type:	Primary Antibodies
Applications:	IF, IHC, WB
Recommended Dilution:	WB: 1 - 2 ug/mL, ICC: 2.5 ug/mL, IF: 20 ug/mL
Reactivity:	Human, Mouse, Rat
Host:	Rabbit
Isotype:	IgG
Clonality:	Polyclonal
Immunogen:	SYNPO antibody was raised against a 17 amino acid synthetic peptide near the carboxy terminus of human SYNPO. The immunogen is located within the last 50 amino acids of SYNPO.
Formulation:	SYNPO Antibody is supplied in PBS containing 0.02% sodium azide.
Concentration:	1 mg/ml
Purification:	SYNPO Antibody is affinity chromatography purified via peptide column.
Conjugation:	Unconjugated
Storage:	Store at -20°C as received.
Stability:	Stable for 12 months from date of receipt.
Gene Name:	synaptopodin
Database Link:	<a href="#">NP_001159680</a> <a href="#">Entrez Gene 11346 Human</a> <a href="#">Q8N3V7</a>
Background:	SYNPO Antibody: SYNPO, also known as synaptopodin, is an actin-associated protein in telencephalic dendrites and renal podocytes. SYNPO is tightly associated with the dendritic spine apparatus, and mice lacking the SYNPO gene lack the apparatus. These SYNPO-null mice also demonstrate an impaired ability to express long-term potentiation as well as deficits in spatial memory tasks, indicating that SYNPO is involved in the regulation of synaptic plasticity. Recent studies suggest that SYNPO is linked to neuronal calcium stores and plays a role in the calcium store-associated ability of neurons to undergo long-term plasticity.



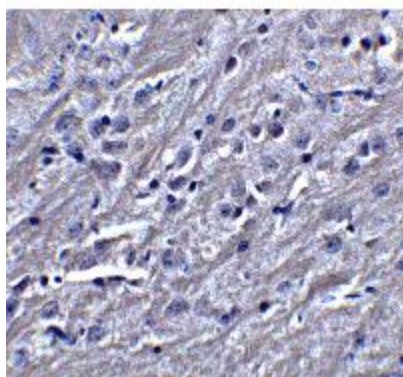
[View online »](#)

Synonyms: KIAA1029

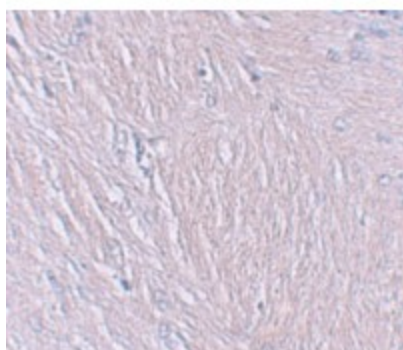
### Product images:



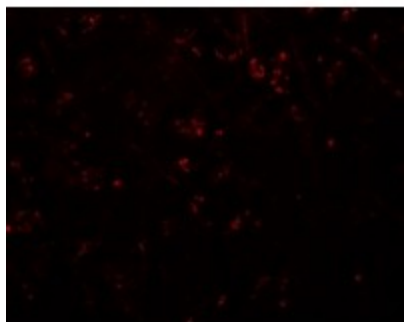
Western blot analysis of SYNPO in rat brain tissue lysate with SYNPO antibody at (A) 1 and (B) 2ug/ml.



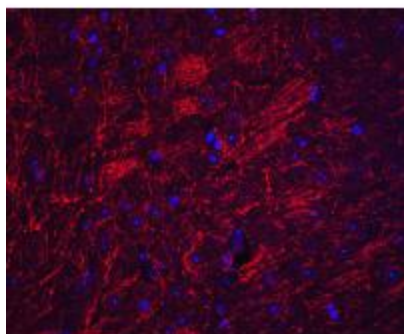
Immunohistochemistry of SYNPO in mouse brain tissue with SYNPO antibody at 5ug/ml.



Immunohistochemistry of SYNPO in human brain tissue with SYNPO antibody at 2.5ug/ml.



Immunofluorescence of SYNPO in human brain tissue with SYNPO antibody at 20ug/ml.



Immunofluorescence of SYNPO in mouse brain tissue with SYNPO antibody at 20ug/ml.