

Product datasheet for **TA319834**

GABARAP Rabbit Polyclonal Antibody

Product data:

Product Type:	Primary Antibodies
Applications:	IF, WB
Recommended Dilution:	WB: 1 - 2 ug/mL
Reactivity:	Human, Mouse, Rat
Host:	Rabbit
Isotype:	IgG
Clonality:	Polyclonal
Immunogen:	GABARAP antibody was raised against a 19 amino acid peptide near the amino terminus of human GABARAP.
Formulation:	GABARAP Antibody is supplied in PBS containing 0.02% sodium azide.
Concentration:	1ug/ul
Purification:	GABARAP Antibody is affinity chromatography purified via peptide column.
Conjugation:	Unconjugated
Storage:	Store at -20°C as received.
Stability:	Stable for 12 months from date of receipt.
Predicted Protein Size:	13 kDa
Gene Name:	GABA type A receptor-associated protein
Database Link:	NP_009209 Entrez Gene 56486 MouseEntrez Gene 58974 RatEntrez Gene 11337 Human O95166

Background: GABARAP Antibody: Gamma-aminobutyric acid (GABA) is the main inhibitory transmitter by increasing a Cl⁻ conductance that inhibits neuronal firing in the central nervous system. It has been shown to activate both ionotropic (GABAA) and metabotropic (GABAB) receptors as well as a third class of receptors called GABAC. GABARAP (GABAA receptor-associated protein) links GABAA receptors to the cytoskeleton and may play a role in intracellular transport of GABAA receptors and its interaction with the cytoskeleton. GABARAP belongs to the MAP1 or ATG8 like family and recent studies show that MAPK15/ERK8 is acting through interaction with ATG8 family proteins to regulate autophagy.



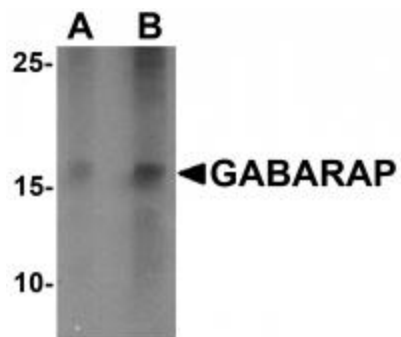
[View online »](#)

Synonyms: ATG8A; GABARAP-a; MM46

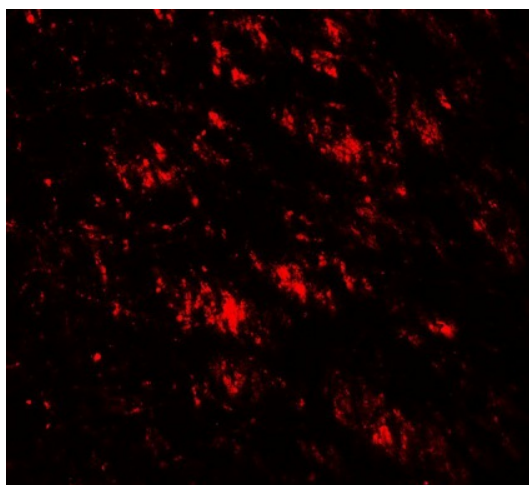
Protein Families: Druggable Genome

Protein Pathways: Regulation of autophagy

Product images:



Western blot analysis of GABARAP in K562 cell lysate with GABARAP antibody at (A) 1 and (B) 2 ug/mL.



Immunofluorescence of GABARAP in human brain tissue with GABARAP antibody at 20 ug/mL.