

Product datasheet for **TA319833**

GPR44 (PTGDR2) Rabbit Polyclonal Antibody

Product data:

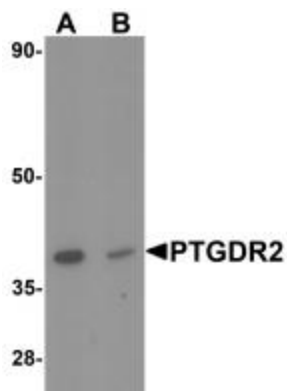
Product Type:	Primary Antibodies
Applications:	IF, WB
Recommended Dilution:	WB: 0.5 - 1 ug/mL
Reactivity:	Human, Mouse
Host:	Rabbit
Isotype:	IgG
Clonality:	Polyclonal
Immunogen:	Rabbit polyclonal PTGDR2 antibody was raised against a 19 amino acid peptide near the center of human PTGDR2.
Formulation:	PTGDR2 Antibody is supplied in PBS containing 0.02% sodium azide.
Concentration:	1ug/ul
Purification:	PTGDR2 Antibody is affinity chromatography purified via peptide column.
Conjugation:	Unconjugated
Storage:	Store at -20°C as received.
Stability:	Stable for 12 months from date of receipt.
Predicted Protein Size:	43 kDa
Gene Name:	prostaglandin D2 receptor 2
Database Link:	NP_004769 Entrez Gene 14764 Mouse Entrez Gene 11251 Human Q9Y5Y4
Background:	PTGDR2 Antibody: The prostaglandin D2 receptor 2 (PTGDR2), also known as CRTH2, is expressed on Th2 cells and eosinophils and mediates chemotaxis of these cells to PGD2 and is thus thought to be a key receptor mediating eosinophil and Th2 recruitment during allergic responses. However, PTGDR2-null mice showed enhanced eosinophil recruitment into the lung consistent with observations that the PTGDR2-null mice produced significantly higher amounts of interleukin-5 (IL-5) and IL-3. This suggests that PTGDR2 plays a nonredundant role in restricting eosinophilia and allergic response in vivo.
Synonyms:	CD294; CRTH2; DL1R; DP2; GPR44



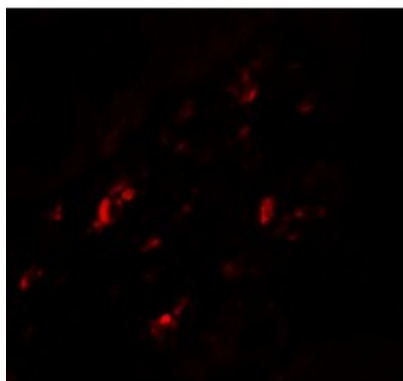
[View online »](#)

Protein Families: Druggable Genome, GPCR, Transmembrane

Product images:



Western blot analysis of PTGDR2 in small intestine tissue lysate with PTGDR2 antibody at 1 ug/mL in (A) the absence and (B) the presence of blocking peptide.



Immunofluorescence of PTGDR2 in human small intestine tissue with PTGDR2 antibody at 20 ug/mL.