

Product datasheet for **TA319832**

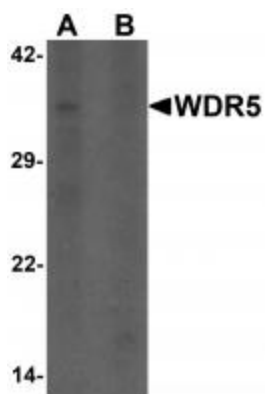
WDR5 Rabbit Polyclonal Antibody

Product data:

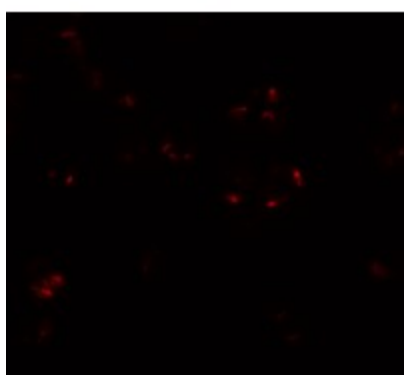
Product Type:	Primary Antibodies
Applications:	IF, WB
Recommended Dilution:	WB: 1 ug/mL, ICC: 5 ug/mL, IF: 5 ug/mL
Reactivity:	Human
Host:	Rabbit
Isotype:	IgG
Clonality:	Polyclonal
Immunogen:	WDR5 antibody was raised against a 19 amino acid synthetic peptide near the amino terminus of human WDR5.
Formulation:	WDR5 Antibody is supplied in PBS containing 0.02% sodium azide.
Concentration:	1ug/ul
Purification:	WDR5 Antibody is affinity chromatography purified via peptide column.
Conjugation:	Unconjugated
Storage:	Store at -20°C as received.
Stability:	Stable for 12 months from date of receipt.
Gene Name:	WD repeat domain 5
Database Link:	NP_060058 Entrez Gene 11091 Human P61964
Background:	WDR5 Antibody: WD repeat domain 5 (WDR5) is a member of the WD repeat protein family, which is involved in a variety of cellular processes, including cell cycle progression, signal transduction, apoptosis, and gene regulation. WDR5, also known as BIG-3, is expressed in the developing growth plate, accelerates chondrocyte and osteoblast differentiation in vitro, and regulates osteoblast differentiation during embryonic bone development. WDR5 interacts with the pluripotency factor Oct4/POU5F1 and is required for the efficient formation of induced pluripotent stem (iPS) cells.
Synonyms:	BIG-3; CFAP89; SWD3
Protein Families:	Druggable Genome



[View online »](#)

Product images:

Western blot analysis of WDR5 in 293 cell lysate with WDR5 antibody at 1 ug/ml in (A) the absence and (B) the presence of blocking peptide.



Immunofluorescence of WDR5 in 293 cells with WDR5 antibody at 20 ug/mL.



Immunocytochemistry of WDR5 in 293 cells with WDR5 antibody at 5 ug/mL.