

## Product datasheet for **TA319831**

### Epac2 (RAPGEF4) Rabbit Polyclonal Antibody

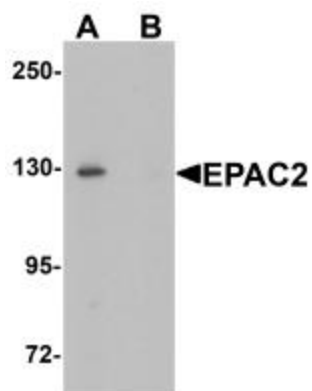
#### Product data:

Product Type:	Primary Antibodies
Applications:	IF, IHC, WB
Recommended Dilution:	WB: 1 ug/mL, ICC: 2.5 ug/mL, IF: 20 ug/mL
Reactivity:	Human, Mouse, Rat
Host:	Rabbit
Isotype:	IgG
Clonality:	Polyclonal
Immunogen:	EPAC2 antibody was raised against a 15 amino acid synthetic peptide near the amino terminus of human EPAC2.
Formulation:	EPAC2 Antibody is supplied in PBS containing 0.02% sodium azide.
Concentration:	1 mg/ml
Purification:	EPAC2 Antibody is affinity chromatography purified via peptide column.
Conjugation:	Unconjugated
Storage:	Store at -20°C as received.
Stability:	Stable for 12 months from date of receipt.
Gene Name:	Rap guanine nucleotide exchange factor 4
Database Link:	<a href="#">NP_008954</a> <a href="#">Entrez Gene 56508 Mouse</a> <a href="#">Entrez Gene 252857 Rat</a> <a href="#">Entrez Gene 11069 Human</a> <a href="#">Q8WZA2</a>
Background:	EPAC2 Antibody: EPAC2, also known as Rap guanine nuclear exchange factor 4 and cAMPGEF-II, is belongs to a family of cyclic adenosine monophosphate (cAMP) binding proteins with guanine nucleotide exchange factor. Like the related protein EPAC1, EPAC2 signaling plays a role in numerous cellular processes such as integrin-mediated cell adhesion, muscle contraction, learning and memory, cell proliferation, and inflammation. Recent evidence suggests that EPAC2 induces synapse remodeling and depression, with mutations in its gene being found in patients with autism.
Synonyms:	CAMP-GEFII; CGEF2; EPAC; EPAC 2; EPAC2; Nbla00496
Protein Pathways:	Leukocyte transendothelial migration

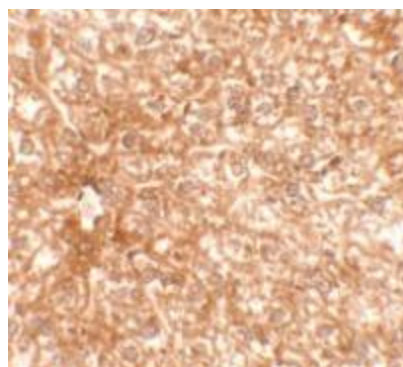


[View online »](#)

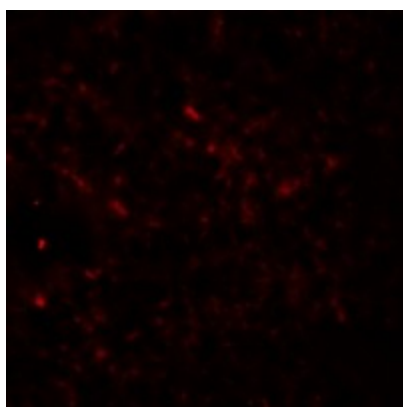
## Product images:



Western blot analysis of EPAC2 in rat liver tissue lysate with EPAC2 antibody at 1 ug/mL in (A) the absence and (B) the presence of blocking peptide.



Immunohistochemistry of EPAC3 in mouse liver tissue with EPAC3 antibody at 2.5 ug/mL.



Immunofluorescence of EPAC2 in mouse liver tissue with EPAC2 antibody at 20 ug/mL.