

Product datasheet for **TA319830**

SLC35D2 Rabbit Polyclonal Antibody

Product data:

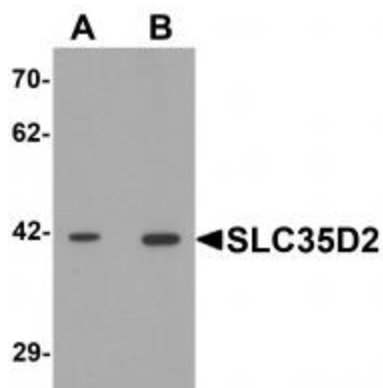
Product Type:	Primary Antibodies
Applications:	IF, WB
Recommended Dilution:	WB: 1 - 2 ug/mL, ICC: 5 ug/mL
Reactivity:	Human
Host:	Rabbit
Isotype:	IgG
Clonality:	Polyclonal
Immunogen:	SLC35D2 antibody was raised against a 14 amino acid synthetic peptide near the carboxy terminus of human SLC35D2.
Formulation:	SLC35D2 Antibody is supplied in PBS containing 0.02% sodium azide.
Concentration:	1ug/ul
Purification:	SLC35D2 Antibody is affinity chromatography purified via peptide column.
Conjugation:	Unconjugated
Storage:	Store at -20°C as received.
Stability:	Stable for 12 months from date of receipt.
Gene Name:	solute carrier family 35 member D2
Database Link:	NP_008932 Entrez Gene 11046 Human Q76EJ3
Background:	SLC35D2 Antibody: The solute carrier family SLC35 consists of at least 17 proteins that act as nucleotide sugar transporters localized to the Golgi apparatus and endoplasmic reticulum. The role of the ER-resident SLC family member SLC35D2 is to transport both UDP-glucuronic acid and UDP-N-acetylgalactosamine. Its overexpression in transfected cells modulated cell surface heparin sulfate expression, suggesting that SLC35D2 is involved in heparin sulfate synthesis. SLC35D2-overexpressing cells also showed increased constitutive and hypotonic stress-stimulated release of UDP-GlcNAc, suggesting that SLC35D2 may be involved in UDP-sugar release and cell signaling.
Synonyms:	hfrc; HFRC1; SQV7L; UGTrel8



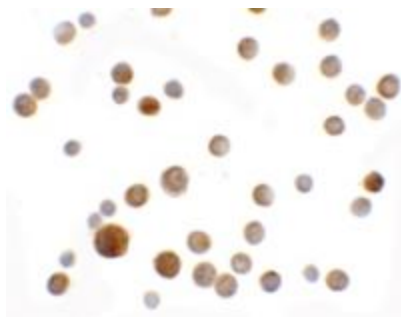
[View online »](#)

Protein Families: Transmembrane

Product images:



Western blot analysis of SLC35D2 in HeLa cell lysate with SLC35D2 antibody at (A) 1 and (B) 2 ug/mL.



Immunocytochemistry of SLC35D2 in HeLa cells with SLC35D2 antibody at 5 ug/mL.