

Product datasheet for **TA319829**

ZBTB6 Rabbit Polyclonal Antibody

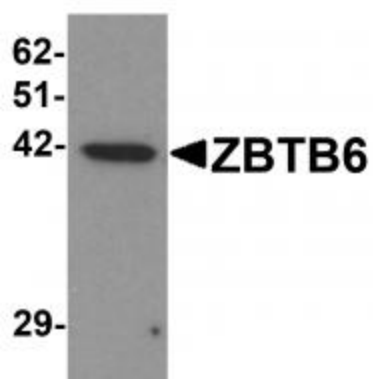
Product data:

Product Type:	Primary Antibodies
Applications:	IF, WB
Recommended Dilution:	WB: 1 ug/mL, ICC: 5 ug/mL, IF: 5 ug/mL
Reactivity:	Human, Mouse
Host:	Rabbit
Isotype:	IgG
Clonality:	Polyclonal
Immunogen:	ZBTB6 antibody was raised against a 15 amino acid synthetic peptide near the center of human ZBTB6.
Formulation:	ZBTB6 Antibody is supplied in PBS containing 0.02% sodium azide.
Concentration:	1ug/ul
Purification:	ZBTB6 Antibody is affinity chromatography purified via peptide column.
Conjugation:	Unconjugated
Storage:	Store at -20°C as received.
Stability:	Stable for 12 months from date of receipt.
Gene Name:	zinc finger and BTB domain containing 6
Database Link:	AAH37282 Entrez Gene 10773 Human Q15916
Background:	ZBTB6 Antibody: The ZBTB family of proteins is comprised of diverse zinc finger proteins that also contain a BTB (BR-C, ttk and bab) domain. ZBTB6, also known as ZNF482, is highly expressed in brain. While little is known about ZBTB6, other ZBTB proteins, such as ZBTB4 bind methylated DNA and repress transcription. Another ZBTB family member, ZBTB5, also acts as a transcriptional repressor, and can interact with co-repressor histone deacetylase complexes such as BCoR, NCoR, and SMRT via its POZ domain, suggesting that ZBTB6 may also act as a transcriptional repressor.
Synonyms:	ZID; ZNF482

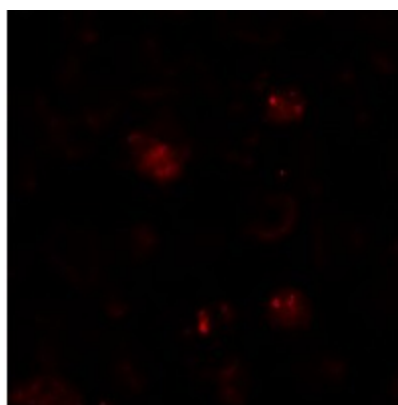


[View online »](#)

Product images:



Western blot analysis of ZBTB6 in EL4 cell lysate with ZBTB6 antibody at 1 ug/mL.



Immunofluorescence of ZBTB6 in EL4 cells with ZBTB6 antibody at 20 ug/mL.



Immunocytochemistry of ZBTB6 in EL4 cells with ZBTB6 antibody at 5 ug/mL.