

Product datasheet for **TA319828**

PLAC1 Rabbit Polyclonal Antibody

Product data:

Product Type:	Primary Antibodies
Applications:	IF, WB
Recommended Dilution:	WB: 1 ug/mL, ICC: 10 ug/mL, IF: 20 ug/mL
Reactivity:	Human
Host:	Rabbit
Isotype:	IgG
Clonality:	Polyclonal
Immunogen:	PLAC1 antibody was raised against a 15 amino acid synthetic peptide near the carboxy terminus of human PLAC1.
Formulation:	PLAC1 Antibody is supplied in PBS containing 0.02% sodium azide.
Concentration:	1 mg/ml
Purification:	PLAC1 Antibody is affinity chromatography purified via peptide column.
Conjugation:	Unconjugated
Storage:	Store at -20°C as received.
Stability:	Stable for 12 months from date of receipt.
Gene Name:	placenta specific 1
Database Link:	NP_068568 Entrez Gene 10761 Human Q9HBJ0
Background:	PLAC1 Antibody: PLAC1 was initially identified as a protein expressed specifically in the placenta and other cells derived from the trophoblast lineage during embryonic development, but has also been found to be expressed ectopically in a wide range of human malignancies, particularly breast cancers. PLAC1 is a membrane-associated protein that is thought to serve a receptor-like function modulating cell-cell or ligand receptor interactions unique to the maternal-placental interface. Decreased expression of PLAC1 is associated with decreased expression of cyclin D1 and reduced expression of AKT kinase, which, combined with the fact that PLAC1 is expressed on the surface of cancer cells, suggests that PLAC1 may be an effective candidate for immunotherapeutic treatments of cancer.

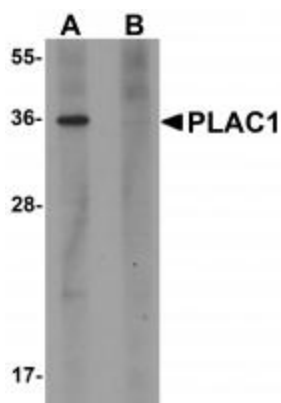


[View online »](#)

Synonyms: CT92; OOSP2L

Protein Families: Secreted Protein

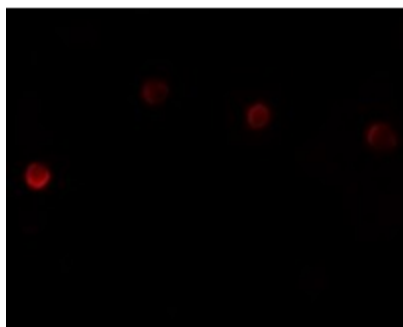
Product images:



Western blot analysis of PLAC1 in human placenta tissue lysate with PLAC1 antibody at 1 ug/mL in (A) the absence and (B) the presence of blocking peptide.



Immunocytochemistry of PLAC1 in HeLa cells with PLAC1 antibody at 10 ug/mL.



Immunofluorescence of PLAC1 in HeLa cells with PLAC1 antibody at 20 ug/mL.