

## Product datasheet for **TA319826**

### SPTLC1 Rabbit Polyclonal Antibody

#### Product data:

Product Type:	Primary Antibodies
Applications:	IHC, WB
Recommended Dilution:	WB: 1 ug/mL, ICC: 5 ug/mL
Reactivity:	Human
Host:	Rabbit
Isotype:	IgG
Clonality:	Polyclonal
Immunogen:	SPT1 antibody was raised against a 17 amino acid synthetic peptide near the carboxy terminus of human SPT1. The immunogen is located within amino acids 380 - 430 of SPT1.
Formulation:	SPT1 Antibody is supplied in PBS containing 0.02% sodium azide.
Concentration:	1ug/ul
Purification:	SPT1 Antibody is affinity chromatography purified via peptide column.
Conjugation:	Unconjugated
Storage:	Store at -20°C as received.
Stability:	Stable for 12 months from date of receipt.
Gene Name:	serine palmitoyltransferase long chain base subunit 1
Database Link:	<a href="#">NP_006406</a> <a href="#">Entrez Gene 10558 Human</a> <a href="#">O15269</a>

**Background:** SPT1 Antibody: Serine palmitoyltransferase, which consists of two different subunits, is the key enzyme in sphingolipid biosynthesis. It converts L-serine and palmitoyl-CoA to 3-oxosphinganine with pyridoxal 5'-phosphate as a cofactor. SPT1 is the long chain base subunit 1 of mammalian serine palmitoyltransferase. SPT1 is not catalytically active but is necessary for the stabilization of the SPT2 subunit and anchoring the holoenzyme to the cytosolic face of the endoplasmic reticulum. Missense mutations in this gene have been identified in patients with hereditary sensory neuropathy type 1 (HSAN1). These mutations induce a shift in the substrate specificity of the holoenzyme, leading to the formation and accumulation of two neurotoxic sphingolipids.



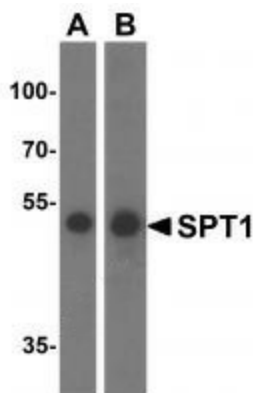
[View online »](#)

**Synonyms:** HSN1; HSN1; LBC1; LCB1; SPT1; SPT1

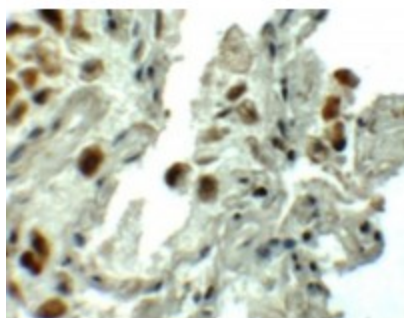
**Protein Families:** Druggable Genome, Transmembrane

**Protein Pathways:** Metabolic pathways, Sphingolipid metabolism

**Product images:**



Western blot analysis of SPT1 in (A) A549 and (B) HeLa cell lysate with SPT1 antibody at 1ug/ml.



Immunohistochemistry of SPT1 in human lung tissue with SPT1 antibody at 5ug/ml.