

Product datasheet for **TA319825**

AGR2 Rabbit Polyclonal Antibody

Product data:

Product Type:	Primary Antibodies
Applications:	IF, IHC, WB
Recommended Dilution:	WB: 1 - 2 ug/mL
Reactivity:	Hamster
Host:	Rabbit
Isotype:	IgG
Clonality:	Polyclonal
Immunogen:	Rabbit polyclonal AGR2 antibody was raised against a 17 amino acid peptide near the amino terminus of human AGR2.
Formulation:	AGR2 Antibody is supplied in PBS containing 0.02% sodium azide.
Concentration:	1ug/ul
Purification:	AGR2 Antibody is affinity chromatography purified via peptide column.
Conjugation:	Unconjugated
Storage:	Store at -20°C as received.
Stability:	Stable for 12 months from date of receipt.
Predicted Protein Size:	19 kDa
Gene Name:	anterior gradient 2, protein disulphide isomerase family member
Database Link:	NP_006399 Entrez Gene 10551 Human O95994

Background: AGR2 Antibody: AGR2 (anterior gradient protein 2) and AGR3 are members of the anterior gradient homolog family. They are secreted cytoplasmic proteins which are involved in metastasis induction and p53 tumour suppressor inhibition. They may serve as molecular markers and potential therapeutic targets for hormone-responsive breast tumours. AGR2 is ubiquitously expressed with upregulated expression in prostate cancer, breast cancer, lung cancer, renal carcinomas and endometrial carcinomas. AGR2 expression is positively correlated with that of the estrogen receptor (ER) and is negatively correlated with that of the epidermal growth factor receptor (EGFR).

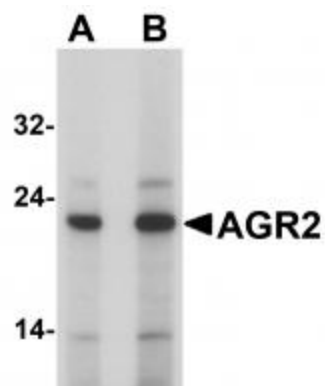


[View online »](#)

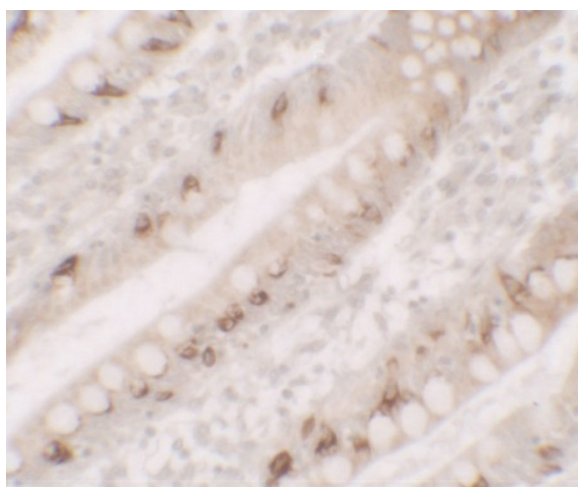
Synonyms: AG2; GOB-4; HAG-2; HEL-S-116; PDIA17; XAG-2

Protein Families: Secreted Protein

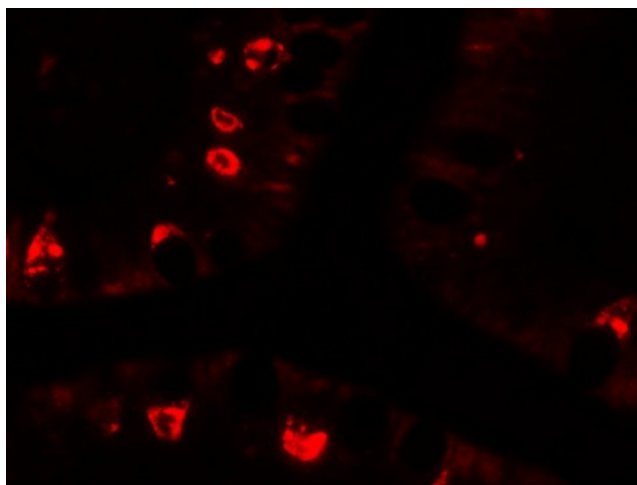
Product images:



Western blot analysis of AGR2 in HeLa cell lysate with AGR2 antibody at (A) 1 and (B) 2 ug/mL



Immunohistochemistry of AGR2 in human small intestine tissue with AGR2 antibody at 5 ug/mL.



Immunofluorescence of AGR2 in human small intestine tissue with AGR2 antibody at 20 ug/mL.