

Product datasheet for **TA319824**

BATF Rabbit Polyclonal Antibody

Product data:

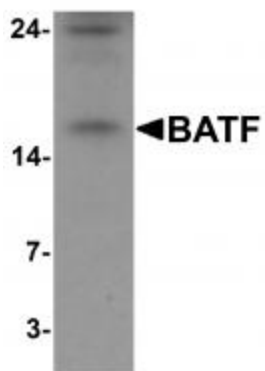
Product Type:	Primary Antibodies
Applications:	IF, WB
Recommended Dilution:	WB: 0.5 ug/mL, IF: 20 ug/mL
Reactivity:	Human, Mouse, Rat
Host:	Rabbit
Isotype:	IgG
Clonality:	Polyclonal
Immunogen:	BATF antibody was raised against a 16 amino acid synthetic peptide near the amino terminus of human BATF.
Formulation:	BATF Antibody is supplied in PBS containing 0.02% sodium azide.
Concentration:	1ug/ul
Purification:	BATF Antibody is affinity chromatography purified via peptide column.
Conjugation:	Unconjugated
Storage:	Store at -20°C as received.
Stability:	Stable for 12 months from date of receipt.
Predicted Protein Size:	14 kDa
Gene Name:	basic leucine zipper ATF-like transcription factor
Database Link:	NP_006390 Entrez Gene 53314 MouseEntrez Gene 299206 RatEntrez Gene 10538 Human Q16520
Background:	BATF Antibody: BATF is a nuclear basic leucine zipper protein that belongs to the AP-1/ATF superfamily of transcription factors. The leucine zipper of this protein mediates dimerization with members of the Jun family of proteins. This protein is thought to be a negative regulator of AP-1/ATF transcriptional events and blocks cellular transformation by Ras and Fos. BATF also is required for the differentiation of IL-17-producing T helper (TH17) cells, a CD4+ subset of T cells that coordinates the inflammatory response in host defense. In both T cells and B cells, BATF is required for the appropriate regulation of the class-switch recombination.
Synonyms:	B-ATF; BATF1; SFA-2; SFA2



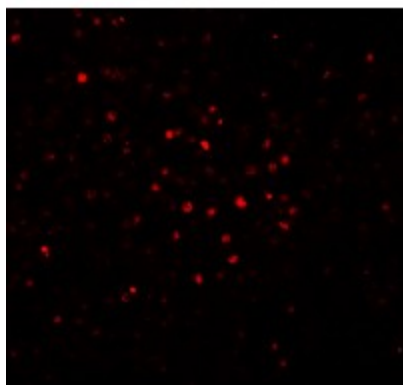
[View online »](#)

Protein Families: Transcription Factors

Product images:



Western blot analysis of BATF in rat spleen tissue lysate with BATF antibody at 1 μ g/ml



Immunofluorescence of BATF in human spleen tissue with BATF antibody at 20 μ g/mL.