

Product datasheet for **TA319823**

KAT5 Rabbit Polyclonal Antibody

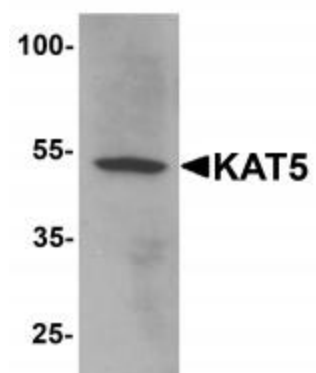
Product data:

Product Type:	Primary Antibodies
Applications:	IF, IHC, WB
Recommended Dilution:	WB: 1 - 2 ug/mL
Reactivity:	Human, Mouse, Rat
Host:	Rabbit
Isotype:	IgG
Clonality:	Polyclonal
Immunogen:	KAT5 antibody was raised against a 15 amino acid peptide near the carboxy terminus of human KAT5.
Formulation:	KAT5 Antibody is supplied in PBS containing 0.02% sodium azide.
Concentration:	1ug/ul
Purification:	KAT5 Antibody is affinity chromatography purified via peptide column.
Conjugation:	Unconjugated
Storage:	Store at -20°C as received.
Stability:	Stable for 12 months from date of receipt.
Predicted Protein Size:	Predicted: 51, 54, 56, 60 kDa; Observed: 53 kDa
Gene Name:	lysine acetyltransferase 5
Database Link:	NP_874369 Entrez Gene 81601 Mouse Entrez Gene 192218 Rat Entrez Gene 10524 Human Q92993
Background:	KAT5 Antibody: KAT5 belongs to the MYST family of histone acetyl transferases (HATs) and was originally isolated as an HIV-1 TAT-interactive protein. HATs play important roles in regulating chromatin remodeling, transcription and other nuclear processes by acetylating histone and non-histone proteins. KAT5 has been shown to play a role in DNA repair and apoptosis and is thought to play an important role in signal transduction and autophagy.
Synonyms:	cPLA2; ESA1; HTATIP; HTATIP1; PLIP; TIP; TIP60; ZC2HC5
Protein Families:	Druggable Genome, Transcription Factors

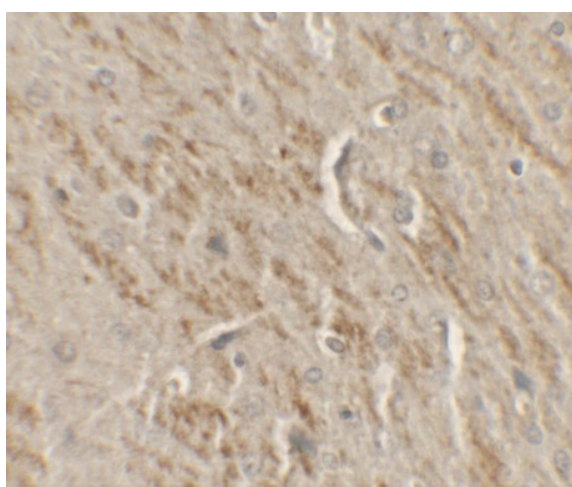


[View online »](#)

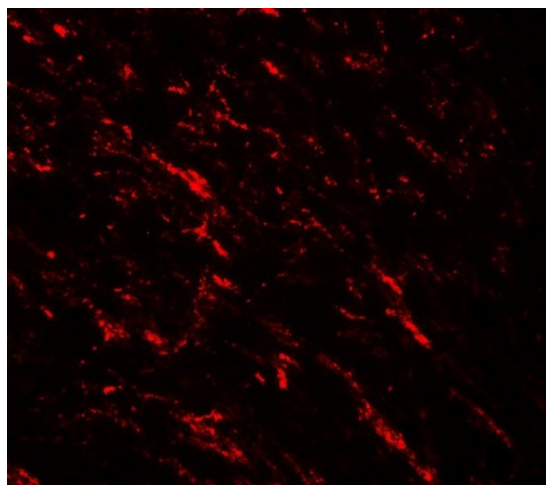
Product images:



Western blot analysis of KAT5 in human brain tissue lysate with KAT5 antibody at 1 ug/mL.



Immunohistochemistry of KAT5 in rat brain tissue with KAT5 antibody at 2.5 ug/mL.



Immunofluorescence of KAT5 in rat brain tissue with KAT5 antibody at 20 ug/mL.