

## Product datasheet for **TA319822**

### PRMT4 (CARM1) Rabbit Polyclonal Antibody

#### Product data:

Product Type:	Primary Antibodies
Applications:	IF, WB
Recommended Dilution:	WB: 1 - 2 ug/mL
Reactivity:	Human, Mouse, Rat
Host:	Rabbit
Isotype:	IgG
Clonality:	Polyclonal
Immunogen:	Rabbit polyclonal CARM1 antibody was raised against a 19 amino acid peptide near the amino terminus of human CARM1.
Formulation:	CARM1 Antibody is supplied in PBS containing 0.02% sodium azide.
Concentration:	1ug/ul
Purification:	CARM1 Antibody is affinity chromatography purified via peptide column.
Conjugation:	Unconjugated
Storage:	Store at -20°C as received.
Stability:	Stable for 12 months from date of receipt.
Predicted Protein Size:	67 kDa
Gene Name:	coactivator associated arginine methyltransferase 1
Database Link:	<a href="#">NP_954592</a> <a href="#">Entrez Gene 59035 MouseEntrez Gene 363026 RatEntrez Gene 10498 Human Q86X55</a>
Background:	CARM1 Antibody: Protein arginine N-methyltransferases, such as CARM1, catalyze the transfer of a methyl group from S-adenosyl-L-methionine to the side chain nitrogens of arginine residues within proteins to form methylated arginine derivatives and S-adenosyl-L-homocysteine. Protein arginine methylation has been implicated in signal transduction, metabolism of nascent pre-RNA, and transcriptional activation. CARM1 functions as a transcriptional co-activator for various nuclear receptors and NF-κB. It has also been shown to methylate histone H3 arginines, inhibiting the binding of corepressors and protecting chromatin from deacetylation, thereby facilitating transcription.

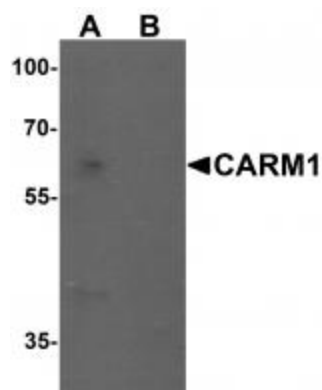


[View online »](#)

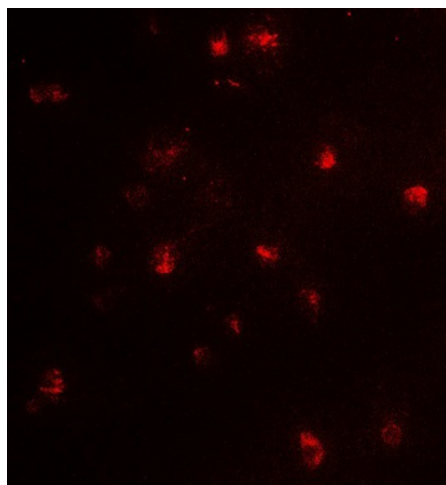
Synonyms: PRMT4

Protein Families: Druggable Genome, Transcription Factors

### Product images:



Western blot analysis of CARM1 in Jurkat cell lysate with CARM1 antibody at 1 ug/mL in (A) the absence and (B) the presence of blocking peptide.



Immunofluorescence of CARM1 in Jurkat cells with CARM1 antibody at 5 ug/mL.