

Product datasheet for **TA319821**

C13orf24 (PIBF1) Rabbit Polyclonal Antibody

Product data:

| | |
|-------------------------|--|
| Product Type: | Primary Antibodies |
| Applications: | IF, IHC, WB |
| Recommended Dilution: | WB: 1 - 2 ug/mL |
| Reactivity: | Human, Mouse, Rat |
| Host: | Rabbit |
| Isotype: | IgG |
| Clonality: | Polyclonal |
| Immunogen: | Rabbit polyclonal PIBF1 antibody was raised against a 15 amino acid peptide near the carboxy terminus of human PIBF1. |
| Formulation: | PIBF1 Antibody is supplied in PBS containing 0.02% sodium azide. |
| Concentration: | 1ug/ul |
| Purification: | PIBF1 Antibody is affinity chromatography purified via peptide column. |
| Conjugation: | Unconjugated |
| Storage: | Store at -20°C as received. |
| Stability: | Stable for 12 months from date of receipt. |
| Predicted Protein Size: | 83 kDa |
| Gene Name: | progesterone immunomodulatory binding factor 1 |
| Database Link: | NP_006337 Entrez Gene 52023 MouseEntrez Gene 306104 RatEntrez Gene 10464 Human Q8WXW3 |

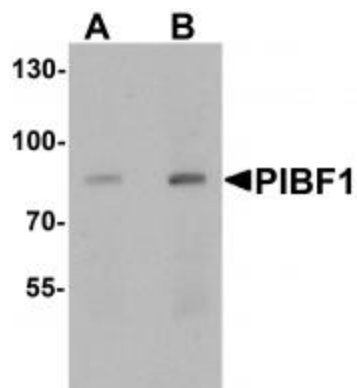
Background: PIBF1 Antibody: PIBF1 is synthesized during pregnancy in response to progesterone by T lymphocytes. PIBF1 inhibits arachidonic acid release, controls NK activity, and modifies the cytokine balance exerting an anti-abortive effect. It contains a leucine zipper motif, a basic zipper sequence, a PEST sequence, a nuclear localization signal, an ER membrane retention signal and N-glycosylation and phosphorylation sites. PIBF1 is significantly higher in healthy pregnant women than in women at risk for premature pregnancy termination. Full-length PIBF1 is associated with the nucleus and functions as a transcription factor, whereas secretion of shorter forms which may act as cytokines is induced by activation of the cell.



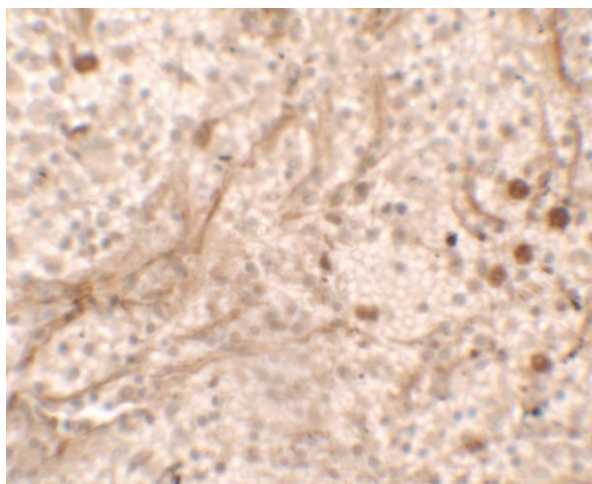
[View online »](#)

Synonyms: C13orf24; CEP90; PIBF

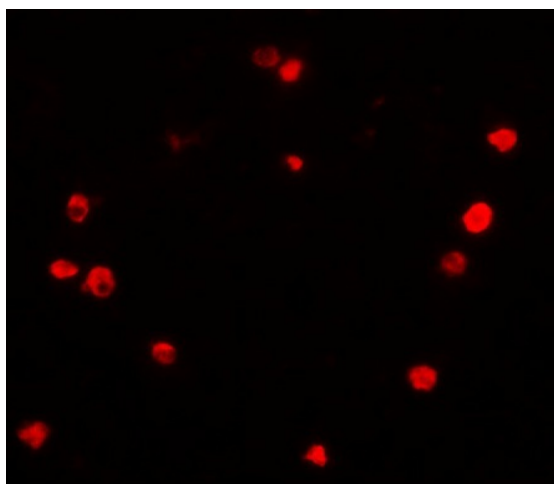
Product images:



Western blot analysis of PIBF1 in human placenta tissue lysate with PIBF1 antibody at (A) 1 and (B) 2 ug/mL



Immunohistochemistry of PBIF in spleen tissue with PBIF antibody at 5 ug/mL.



Immunofluorescence of PBIF in human spleen tissue with PBIF antibody at 20 ug/mL.