

Product datasheet for **TA319816**

Epac1 (RAPGEF3) Rabbit Polyclonal Antibody

Product data:

| | |
|-----------------------|--|
| Product Type: | Primary Antibodies |
| Applications: | IF, IHC, WB |
| Recommended Dilution: | WB: 1 ug/mL, ICC: 2.5 ug/mL, IF: 20 ug/mL |
| Reactivity: | Human, Mouse, Rat |
| Host: | Rabbit |
| Isotype: | IgG |
| Clonality: | Polyclonal |
| Immunogen: | EPAC1 antibody was raised against an 18 amino acid synthetic peptide near the amino terminus of human EPAC1. |
| Formulation: | EPAC1 Antibody is supplied in PBS containing 0.02% sodium azide. |
| Concentration: | 1ug/ul |
| Purification: | EPAC1 Antibody is affinity chromatography purified via peptide column. |
| Conjugation: | Unconjugated |
| Storage: | Store at -20°C as received. |
| Stability: | Stable for 12 months from date of receipt. |
| Gene Name: | Rap guanine nucleotide exchange factor 3 |
| Database Link: | NP_001092001 Entrez Gene 59326 Rat Entrez Gene 223864 Mouse Entrez Gene 10411 Human O95398 |
| Background: | EPAC1 Antibody: EPAC1, also known as Rap guanine nuclear exchange factor 3 and cAMPGEF-I, is widely expressed but most prominently in brain, heart, kidney, pancreas, spleen, ovary, thyroid and spinal cord. EPAC1 is a cAMP-binding protein with intrinsic guanine nuclear exchange factor activity that couples cAMP production to the activation of Rap, a GTPase belonging to the Ras family. This activation of Rap influences numerous cellular processes such as integrin-mediated cell adhesion, vascular endothelial barrier formation, and cardiac myocyte gap junction formation. Recently, EPAC1 has been suggested to also be involved in the cAMP-dependent regulation of ion channel formation, intracellular Ca ⁺⁺ signalling, ion transporter activity, and exocytosis. |

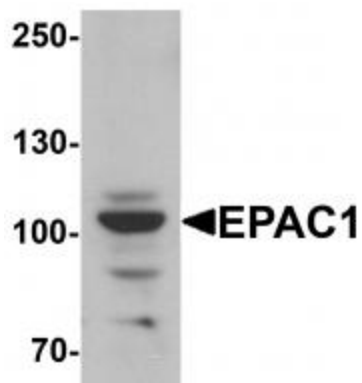


[View online »](#)

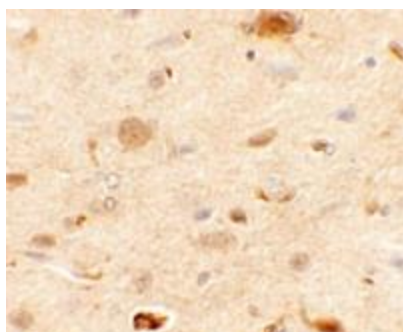
Synonyms: bcm910; CAMP-GEFI; EPAC; EPAC1; HSU79275

Protein Pathways: Leukocyte transendothelial migration, Long-term potentiation

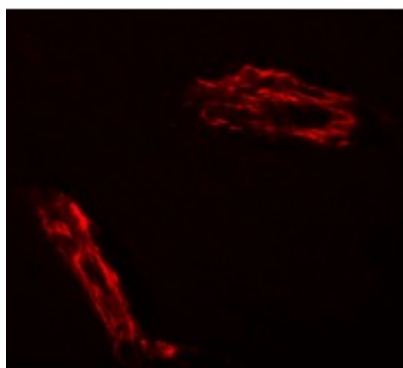
Product images:



Western blot analysis of EPAC1 in rat skeletal muscle tissue lysate with EPAC1 antibody at 1 ug/mL.



Immunohistochemistry of EPAC1 in rat brain tissue with EPAC1 antibody at 2.5 ug/mL.



Immunofluorescence of EPAC1 in rat brain tissue with EPAC1 antibody at 20 ug/mL.