

Product datasheet for **TA319811**

TCIRG1 Rabbit Polyclonal Antibody

Product data:

Product Type:	Primary Antibodies
Applications:	WB
Recommended Dilution:	WB: 0.5 ug/mL
Reactivity:	Human, Mouse, Rat
Host:	Rabbit
Isotype:	IgG
Clonality:	Polyclonal
Immunogen:	TCIRG1 antibody was raised against a 19 amino acid synthetic peptide near the amino terminus of human TCIRG1.
Formulation:	TCIRG1 Antibody is supplied in PBS containing 0.02% sodium azide.
Concentration:	1ug/ul
Purification:	TCIRG1 Antibody is affinity chromatography purified via peptide column.
Conjugation:	Unconjugated
Storage:	Store at -20°C as received.
Stability:	Stable for 12 months from date of receipt.
Predicted Protein Size:	91 kDa
Gene Name:	T-cell immune regulator 1, ATPase H ⁺ transporting V0 subunit a3
Database Link:	NP_006010 Entrez Gene 27060 Mouse Entrez Gene 293650 Rat Entrez Gene 10312 Human Q13488
Background:	TCIRG1 Antibody: The T-cell immune regulator 1 (TCIRG1) is the a3 subunit of the vacuolar-type proton transporting ATPase (V-ATPase), a proton pump in late endosomes and lysosomes that functions in the luminal acidification of these organelles. Genetic defects in the gene encoding this protein a responsible for a severe form of autosomal recessive osteopetrosis, a condition that leads to increased bone density, decreased bone strength, and inflammation in bone tissues. TCIRG1 is also required for the normal secretion of insulin and the bacteria-killing function of macrophages.
Synonyms:	a3; Atp6j; ATP6N1C; ATP6V0A3; OC-116kDa; OC116; OPTB1; Stv1; TIRC7; Vph1

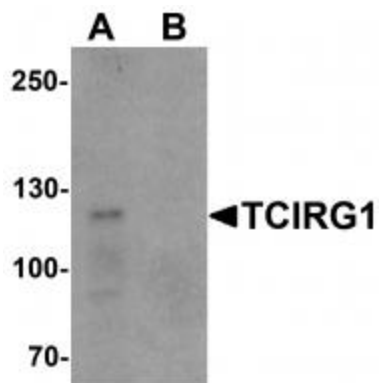


[View online »](#)

Protein Families: Transmembrane

Protein Pathways: Epithelial cell signaling in Helicobacter pylori infection, Lysosome, Metabolic pathways, Oxidative phosphorylation, Vibrio cholerae infection

Product images:



Western blot analysis of TCIRG1 in EL4 cell lysate with TCIRG1 antibody at 0.5 ug/ml in (A) the absence and (B) the presence of blocking peptide.