

## Product datasheet for **TA319810**

### APC2 Rabbit Polyclonal Antibody

#### Product data:

Product Type:	Primary Antibodies
Applications:	IF, WB
Recommended Dilution:	WB: 1 - 2 ug/mL, ICC: 5 ug/mL, IF: 20 ug/mL
Reactivity:	Human, Mouse
Host:	Rabbit
Isotype:	IgG
Clonality:	Polyclonal
Immunogen:	APC2 antibody was raised against an 18 amino acid synthetic peptide near the center of human APC2.
Formulation:	APC2 Antibody is supplied in PBS containing 0.02% sodium azide.
Concentration:	1ug/ul
Purification:	APC2 Antibody is affinity chromatography purified via peptide column.
Conjugation:	Unconjugated
Storage:	Store at -20°C as received.
Stability:	Stable for 12 months from date of receipt.
Gene Name:	adenomatosis polyposis coli 2
Database Link:	<a href="#">BAA34611</a> <a href="#">Entrez Gene 10297 Human</a> <a href="#">O95996</a>



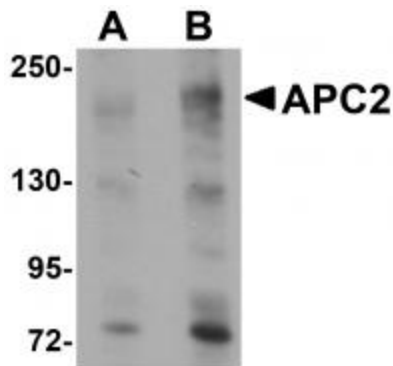
[View online »](#)

**Background:**

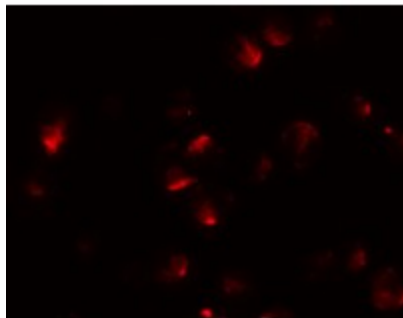
APC2 Antibody: Cell cycle regulated protein ubiquitination and degradation within subcellular domains is thought to be essential for the normal progression of mitosis. APC2 is a highly conserved component of the anaphase promoting complex/cyclosome (APC/C), a cell cycle-regulated E3 ubiquitin ligase that controls progression through mitosis and the G1 phase of the cell cycle. APC/C is responsible for degrading anaphase inhibitors, mitotic cyclins, and spindle-associated proteins ensuring that events of mitosis take place in proper sequence. The individual APC/C components mRNA and protein levels are expressed at approximately the same levels in most tissues and cell lines, suggesting that they perform their functions as part of a complex. Like APC11, APC2 contains cullin and RING finger domains that are thought to be important in regulating ubiquitination activity.

**Synonyms:**

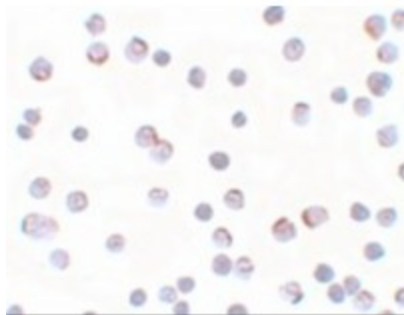
APCL

**Product images:**

Western blot analysis of APC2 in HeLa cell lysate with APC2 antibody at (A) 1 and (B) 2 ug/mL.



Immunofluorescence of APC2 in HeLa cells with APC2 antibody at 20 ug/mL.



Immunocytochemistry of APC2 in HeLa cells with APC2 antibody at 5 ug/mL.