

Product datasheet for **TA319809**

TSHZ1 Rabbit Polyclonal Antibody

Product data:

Product Type:	Primary Antibodies
Applications:	IF, WB
Recommended Dilution:	WB: 1 ug/mL
Reactivity:	Human, Mouse, Rat
Host:	Rabbit
Isotype:	IgG
Clonality:	Polyclonal
Immunogen:	TSHZ1 antibody was raised against a 16 amino acid synthetic peptide near the amino terminus of human TSHZ1.
Formulation:	TSHZ1 Antibody is supplied in PBS containing 0.02% sodium azide.
Concentration:	1 mg/ml
Purification:	TSHZ1 Antibody is affinity chromatography purified via peptide column.
Conjugation:	Unconjugated
Storage:	Store at -20°C as received.
Stability:	Stable for 12 months from date of receipt.
Gene Name:	teashirt zinc finger homeobox 1
Database Link:	NP_005777 Entrez Gene 110796 Mouse Entrez Gene 307217 Rat Entrez Gene 10194 Human Q6ZSZ6

Background: TSHZ1 Antibody: The Teashirt zinc finger homeobox (TSHZ) family comprise a family of evolutionarily conserved transcription factors that, in Drosophila, are active in specific body parts for patterning, but whose function in vertebrates is less clear. TSHZ1 has been found to be required for axial skeleton, soft palate and middle ear development in mice and may be involved in a common pathway with the Hox genes. Both TSHZ1 and the related protein TSHZ3 have been found to interact with FE65, an adapter protein that binds to the amyloid protein precursor (APP) in neurons. Together with SET, a component of the inhibitor of acetyl transferase, and histone deacetylases, these proteins formed a gene-silencing complex whose target includes caspase-4.

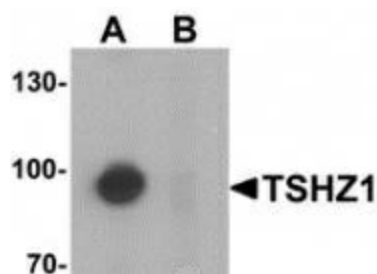


[View online »](#)

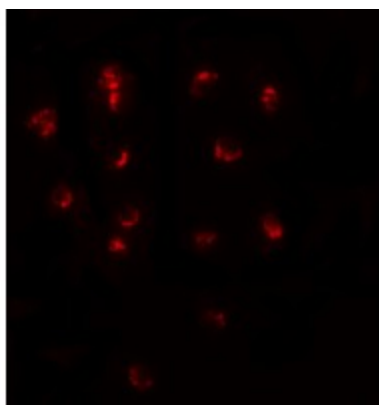
Synonyms: CAA; NY-CO-33; SDCCAG33; TSH1

Protein Families: Transcription Factors

Product images:



Western blot analysis of TSHZ1 in A-20 cell lysate with TSHZ1 antibody at 1 ug/mL in (A) the absence and (B) the presence of blocking peptide.



Immunofluorescence of TSHZ1 in A20 cells with TSHZ1 antibody at 20 ug/mL.



Immunocytochemistry of TSHZ1 in A20 cells with TSHZ1 antibody at 2.5 ug/mL.