

Product datasheet for **TA319807**

UBA2 Rabbit Polyclonal Antibody

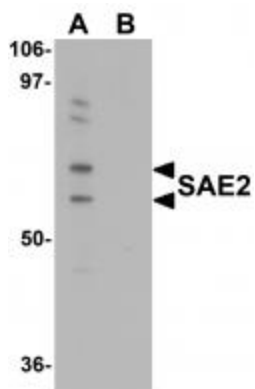
Product data:

Product Type:	Primary Antibodies
Applications:	IF, WB
Recommended Dilution:	WB: 0.25 ug/mL, ICC:4 ug/mL, IF: 5 ug/mL
Reactivity:	Human
Host:	Rabbit
Isotype:	IgG
Clonality:	Polyclonal
Immunogen:	SAE2 antibody was raised against an 18 amino acid synthetic peptide near the carboxy terminus of human SAE2.
Formulation:	SAE2 Antibody is supplied in PBS containing 0.02% sodium azide.
Concentration:	1ug/ul
Purification:	SAE2 Antibody is affinity chromatography purified via peptide column.
Conjugation:	Unconjugated
Storage:	Store at -20°C as received.
Stability:	Stable for 12 months from date of receipt.
Gene Name:	ubiquitin like modifier activating enzyme 2
Database Link:	NP_005490 Entrez Gene 10054 Human Q9UBT2
Background:	SAE2 Antibody: Small ubiquitin-like modifiers (SUMOs) are a family of small, related proteins (SUMO-1/2/3/4) that can be enzymatically attached to a target protein by a post-translational modification process termed sumoylation, a major regulator of protein function in cellular processes such as nuclear transport, transcriptional regulation, apoptosis and protein stability. This sumoylation is effected by the heterodimeric enzyme SAE1/SAE2 and the SUMO-1-conjugating enzyme Ubch9. The sumoylation pathway mediated by SAE1/SAE2 is distinct from other ubiquitin-like protein (Ubl) pathways.
Synonyms:	ARX; HRIHFB2115; SAE2
Protein Pathways:	Ubiquitin mediated proteolysis

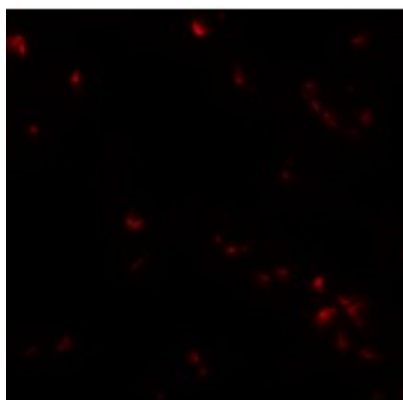


[View online »](#)

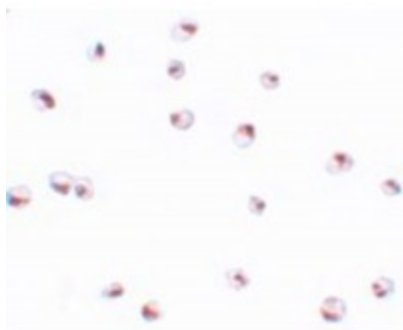
Product images:



Western blot analysis of SAE2 in 293 cell lysate with SAE2 antibody at 0.25 ug/mL in (A) the absence and (B) the presence of blocking peptide.



Immunofluorescence of SAE2 in 293 cells with SAE2 antibody at 20 ug/mL.



Immunocytochemistry of SAE2 in 293 cells with SAE2 antibody at 4 ug/mL.