

Product datasheet for **TA319805**

Bim (BCL2L11) Mouse Monoclonal Antibody [Clone ID: 1C2C8]

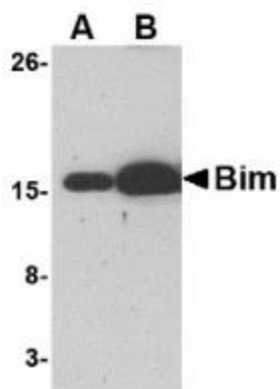
Product data:

Product Type:	Primary Antibodies
Clone Name:	1C2C8
Applications:	IF, WB
Recommended Dilution:	WB: 1 ug/mL, ICC: 10 ug/mL, IF: 20 ug/mL
Reactivity:	Human, Mouse
Host:	Mouse
Isotype:	IgG1
Clonality:	Monoclonal
Immunogen:	Mouse monoclonal Bim antibody was raised against a recombinant protein corresponding to amino acids 2 to 198 of human Bim.
Formulation:	Bim Monoclonal Antibody is supplied in PBS containing 0.02% sodium azide.
Concentration:	1ug/ul
Purification:	Bim Monoclonal Antibody is immunoaffinity chromatography purified IgG.
Conjugation:	Unconjugated
Storage:	Store at -20°C as received.
Stability:	Stable for 12 months from date of receipt.
Gene Name:	BCL2 like 11
Database Link:	NP_619527 Entrez Gene 10018 Human O43521
Background:	Bim Monoclonal Antibody: Members in the Bcl-2 family are critical regulators of apoptosis by either inhibiting or promoting cell death. Bcl-2 homology 3 (BH3) domain is a potent death domain. BH3 domain containing pro-apoptotic proteins, including Bad, Bax, Bid, Bik, and Hrk, form a growing subclass of the Bcl-2 family. Bim is another BH3 domain containing protein which can induce apoptosis. Bim interacts with diverse members in the pro-survival Bcl-2 sub-family including Bcl-2, Bcl-xL and Bcl-w. The messenger RNA of Bim is ubiquitously expressed in multiple tissues and cell lines.
Synonyms:	BAM; BIM; BOD

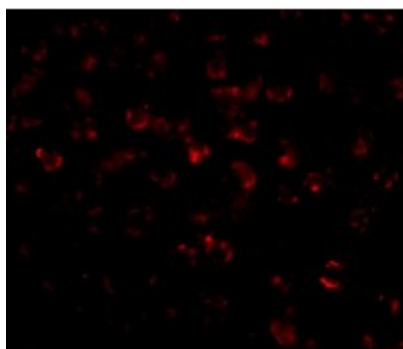


[View online »](#)

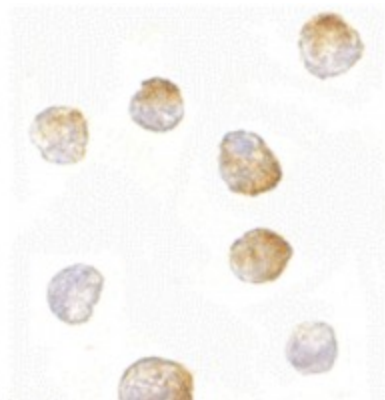
Product images:



Western blot analysis of (A) 5 and (B) 25 ng of Bim recombinant protein with Bim antibody at 1 ug/mL.



Immunofluorescence of Bim in K562 cells with Bim antibody at 20 ug/mL.



Immunocytochemistry of Bim in K562 cells with Bim antibody at 10 ug/mL.