

## Product datasheet for **TA319800**

### ZBTB40 Rabbit Polyclonal Antibody

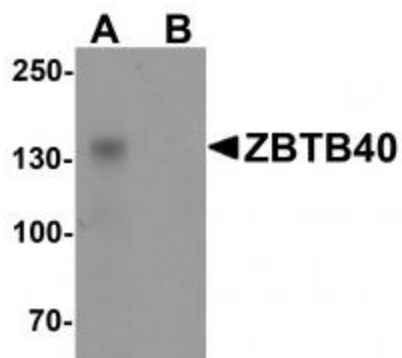
#### Product data:

Product Type:	Primary Antibodies
Applications:	IF, WB
Recommended Dilution:	WB: 0.5 ug/mL, IF: 20 ug/mL
Reactivity:	Human
Host:	Rabbit
Isotype:	IgG
Clonality:	Polyclonal
Immunogen:	ZBTB40 antibody was raised against a 19 amino acid synthetic peptide near the amino terminus of human ZBTB40.
Formulation:	ZBTB40 Antibody is supplied in PBS containing 0.02% sodium azide.
Concentration:	1ug/ul
Purification:	ZBTB40 Antibody is affinity chromatography purified via peptide column.
Conjugation:	Unconjugated
Storage:	Store at -20°C as received.
Stability:	Stable for 12 months from date of receipt.
Gene Name:	zinc finger and BTB domain containing 40
Database Link:	<a href="#">NP_055685</a> <a href="#">Entrez Gene 9923 Human</a> <a href="#">Q9NUA8</a>
Background:	ZBTB40 Antibody: The ZBTB family of proteins is comprised of diverse zinc finger proteins that also contain a BTB (BR-C, ttk and bab) domain. While little is known about ZBTB40, other ZBTB proteins, such as ZBTB4 bind methylated DNA and repress transcription. Single nucleotide polymorphisms near ZBTB40 have been linked to differences in bone mineral density of the hip and lumbar spine, and had a significant association with low-trauma fractures suggesting that ZBTB40 may be involved in bone development and formation.
Synonyms:	ZNF923
Protein Families:	Transcription Factors

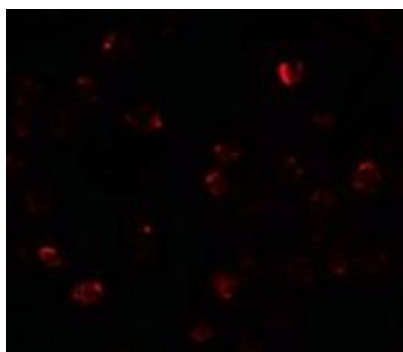


[View online »](#)

## Product images:



Western blot analysis of ZBTB40 in Raji cell lysate with ZBTB40 antibody at 0.5 ug/ml in (A) the absence and (B) the presence of blocking peptide.



Immunofluorescence of ZBTB40 in Raji cells with ZBTB40 antibody at 20 ug/mL.