

Product datasheet for **TA319798**

SGSM2 Rabbit Polyclonal Antibody

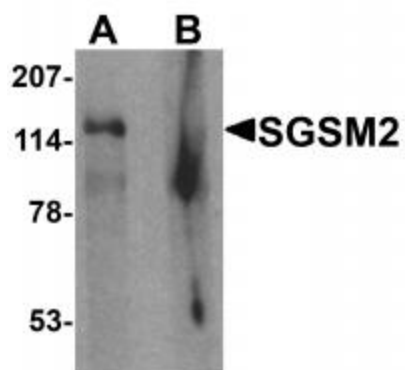
Product data:

Product Type:	Primary Antibodies
Applications:	IF, WB
Recommended Dilution:	WB: 1 ug/mL, IF: 20 ug/mL
Reactivity:	Human, Mouse, Rat
Host:	Rabbit
Isotype:	IgG
Clonality:	Polyclonal
Immunogen:	SGSM2 antibody was raised against an 18 amino acid synthetic peptide near the center of human SGSM2.
Formulation:	SGSM2 Antibody is supplied in PBS containing 0.02% sodium azide.
Concentration:	1ug/ul
Purification:	SGSM2 Antibody is affinity chromatography purified via peptide column.
Conjugation:	Unconjugated
Storage:	Store at -20°C as received.
Stability:	Stable for 12 months from date of receipt.
Predicted Protein Size:	116 kDa
Gene Name:	small G protein signaling modulator 2
Database Link:	NP_055668 Entrez Gene 9905 Human O43147
Background:	SGSM2 Antibody: Small G proteins such as RAP and RAB proteins are the key molecules in intracellular signal transduction and vesicle transportation. A novel protein family small G protein signaling modulator (SGSM) consisting of three members SGSM1-3 bind to RAP and RAB family proteins. All three SGSM proteins possess both a RUN domain and a TBC domain. SGSM2 is a Rab9A effector that activates GTP hydrolysis by Rab32 and Rab33B proteins.
Synonyms:	RUTBC1

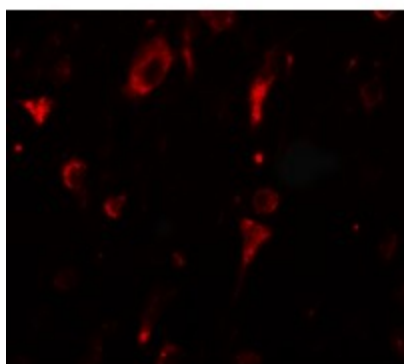


[View online »](#)

Product images:



Western blot analysis of SGSM2 in human cerebellum tissue lysate with SGSM2 antibody at 1 ug/ml in (A) the absence and (B) the presence of blocking peptide



Immunofluorescence of SGSM2 in human brain tissue with SGSM2 antibody at 20 ug/mL.