

## Product datasheet for **TA319797**

### Strumpellin (WASHC5) Rabbit Polyclonal Antibody

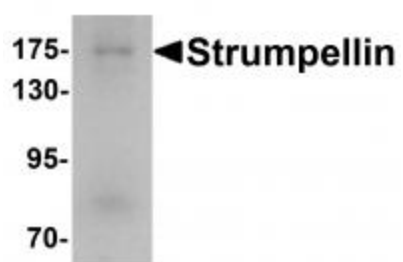
#### Product data:

|                       |   |
|-----------------------|---|
| Product Type:         | Primary Antibodies  |
| Applications:         | WB  |
| Recommended Dilution: | WB: 1 ug/mL   |
| Reactivity:           | Human, Mouse, Rat   |
| Host:                 | Rabbit  |
| Isotype:              | IgG   |
| Clonality:            | Polyclonal  |
| Immunogen:            | Strumpellin antibody was raised against a 19 amino acid synthetic peptide near the carboxy terminus of human Strumpellin.   |
| Formulation:          | Strumpellin Antibody is supplied in PBS containing 0.02% sodium azide.  |
| Concentration:        | 1ug/ul  |
| Purification:         | Strumpellin Antibody is affinity chromatography purified via peptide column.  |
| Conjugation:          | Unconjugated  |
| Storage:              | Store at -20°C as received.   |
| Stability:            | Stable for 12 months from date of receipt.  |
| Gene Name:            | KIAA0196  |
| Database Link:        | <a href="#">NP_055661</a><br><a href="#">Entrez Gene 223593 Mouse</a> <a href="#">Entrez Gene 362919 Rat</a> <a href="#">Entrez Gene 9897 Human</a><br><a href="#">Q12768</a>   |
| Background:           | Strumpellin Antibody: Strumpellin is a ubiquitously expressed, multi-transmembrane and spectrin-repeat-containing protein. It is named for Strumpell disease; a progressive upper-motor neurodegenerative disease termed hereditary spastic paraplegia (HSP). The Strumpellin gene maps to the eighth HSP locus (SPG8) on chromosome 8p24.13. Three families linked to this locus have mutations in the Strumpellin gene; rescue studies of zebrafish with decreased Strumpellin expression with Strumpellin mRNA containing these mutations showed impaired normal function of this protein. Recent studies suggest that Strumpellin may also be involved in protein aggregation diseases. |
| Synonyms:             | RTSC; SPG8  |



[View online »](#)

## Product images:



Western blot analysis of Strumpellin in human ovary tissue lysate with Strumpellin antibody at 1 ug/mL.