

## Product datasheet for **TA319796**

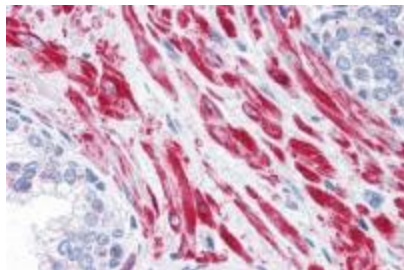
### **TBC1D4 Rabbit Polyclonal Antibody**

#### **Product data:**

|                                |   |
|--------------------------------|---|
| <b>Product Type:</b>           | Primary Antibodies  |
| <b>Applications:</b>           | IHC   |
| <b>Recommended Dilution:</b>   | ICC: 10 ug/mL   |
| <b>Reactivity:</b>             | Human   |
| <b>Host:</b>                   | Rabbit  |
| <b>Isotype:</b>                | IgG   |
| <b>Clonality:</b>              | Polyclonal  |
| <b>Immunogen:</b>              | TBC1D4 antibody was raised against an 19 amino acid peptide near the carboxy terminus of human TBC1D4 .   |
| <b>Formulation:</b>            | TBC1D4 Antibody is supplied in PBS containing 0.02% sodium azide.   |
| <b>Concentration:</b>          | 1ug/ul  |
| <b>Purification:</b>           | TBC1D4 Antibody is affinity chromatography purified via peptide column.   |
| <b>Conjugation:</b>            | Unconjugated  |
| <b>Storage:</b>                | Store at -20°C as received.   |
| <b>Stability:</b>              | Stable for 12 months from date of receipt.  |
| <b>Predicted Protein Size:</b> | Predicted: 143 kDa; Observed: 140 kDa   |
| <b>Gene Name:</b>              | TBC1 domain family member 4   |
| <b>Database Link:</b>          | <a href="#">NP_055647</a><br><a href="#">Entrez Gene 9882 Human</a><br><a href="#">O60343</a>   |
| <b>Background:</b>             | TBC1D4 Antibody: TBC1D4, also known as the Akt substrate AS160, was initially identified as an Akt substrate containing a GTPase-activating domain that regulates GLUT4 trafficking, with activation following insulin stimulation. TBC1D4 truncations in humans is a major cause of dominant inherited insulin resistance. The loss of TBC1D4 results in the accumulation of GLUT4 in compartments that are primed for fusion in basal adipocytes. |
| <b>Synonyms:</b>               | AS160; NIDDM5   |



[View online »](#)

**Product images:**

Immunohistochemistry of TBC1D4 in human prostate tissue with TBC1D4 antibody at 10 ug/mL.