

Product datasheet for **TA319794**

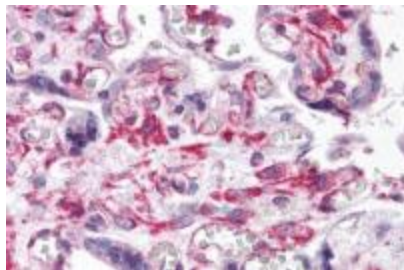
RUSC2 Rabbit Polyclonal Antibody

Product data:

Product Type:	Primary Antibodies
Applications:	IHC
Recommended Dilution:	ICC: 5 ug/mL
Reactivity:	Human
Host:	Rabbit
Isotype:	IgG
Clonality:	Polyclonal
Immunogen:	RUSC2 antibody was raised against a 15 amino acid synthetic peptide from near the carboxy terminus of human RUSC2.
Formulation:	RUSC2 Antibody is supplied in PBS containing 0.02% sodium azide.
Concentration:	1ug/ul
Purification:	RUSC2 Antibody is affinity chromatography purified via peptide column.
Conjugation:	Unconjugated
Storage:	Store at -20°C as received.
Stability:	Stable for 12 months from date of receipt.
Gene Name:	RUN and SH3 domain containing 2
Database Link:	NP_001098673 Entrez Gene 9853 Human Q8N2Y8
Background:	RUSC2 Antibody: RUSC2, also known as Iporin, shares with the related protein RUSC1 a common domain structure of RUN, leucine zipper and SH3 domain in addition to over 30% amino acid identity. RUSC2 is a rab1-interacting protein that also interacts with GM130, another rab1-interacting protein. RUSC2 interacts with specific rab1 isoforms with different rab-binding specificity. It has been suggested that RUSC2 may function as a link between the targeting of ER derived vesicles triggered by the rab1 GTPase and a signaling pathway composed of proteins containing SH3 and/or poly-proline regions.
Synonyms:	Iporin



[View online »](#)

Product images:

Immunohistochemistry of RUSC2 in human placenta tissue with RUSC2 antibody at 5 ug/mL.