

Product datasheet for **TA319793**

Smad Interacting Protein 1 (ZEB2) Rabbit Polyclonal Antibody

Product data:

Product Type:	Primary Antibodies
Applications:	IF, WB
Recommended Dilution:	WB: 1 - 2 ug/mL, ICC: 20 ug/mL, IF: 20 ug/mL
Reactivity:	Human, Mouse, Rat
Host:	Rabbit
Isotype:	IgG
Clonality:	Polyclonal
Immunogen:	ZEB2 antibody was raised against an 18 amino acid synthetic peptide near the carboxy terminus of human ZEB2.
Formulation:	ZEB2 Antibody is supplied in PBS containing 0.02% sodium azide.
Concentration:	1ug/ul
Purification:	ZEB2 Antibody is affinity chromatography purified via peptide column.
Conjugation:	Unconjugated
Storage:	Store at -20°C as received.
Stability:	Stable for 12 months from date of receipt.
Gene Name:	zinc finger E-box binding homeobox 2
Database Link:	AAI27103 Entrez Gene 9839 Human O60315



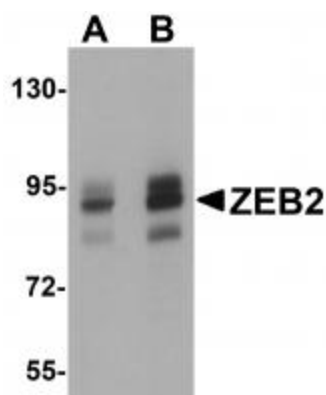
[View online »](#)

Background:

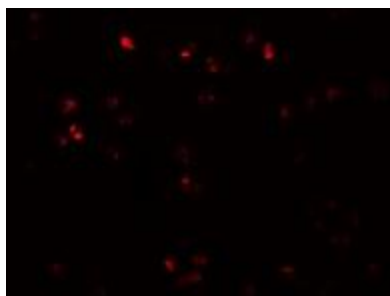
ZEB2 Antibody: ZEB2, initially identified as Smad interacting-protein 1, is normally located in the nucleus and functions as a DNA-binding transcriptional repressor that interacts with activated SMADs. Like the homologous ZEB1, ZEB2 inhibits the transcription of the E-cadherin gene and induces epithelial-mesenchymal transition, a genetic program controlling cell migration during embryonic development and wound healing, in vitro. ZEB2 can also protect cells from DNA damage-induced apoptosis, suggesting that its expression may contribute to tumor progression. Recent evidence has shown that ZEB2 is often observed in the cytoplasm in numerous cancer tissues, indicating that its localization may be regulated in normal and tumor tissues. Mutations in this gene are also associated with Hirschsprung disease/Mowat-Wilson syndrome.

Synonyms:

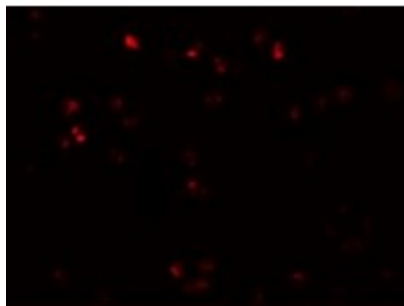
HSPC082; SIP-1; SIP1; SMADIP1; ZFHX1B

Product images:

Western blot analysis of ZEB2 in Jurkat cell lysate with ZEB2 antibody at (A) 1 and (B) 2ug/mL.



Immunocytochemistry of ZEB2 in Jurkat cells with ZEB2 antibody at 20 ug/mL.



Immunofluorescence of ZEB2 in Jurkat cells with ZEB2 antibody at 20 ug/mL.