

Product datasheet for **TA319790**

KEAP1 Rabbit Polyclonal Antibody

Product data:

| | |
|-------------------------|---|
| Product Type: | Primary Antibodies |
| Applications: | IF, WB |
| Recommended Dilution: | WB: 1 - 2 ug/mL, IF: 20 ug/mL |
| Reactivity: | Human, Mouse, Rat |
| Host: | Rabbit |
| Isotype: | IgG |
| Clonality: | Polyclonal |
| Immunogen: | KEAP1 antibody was raised against a 19 amino acid synthetic peptide near the carboxy terminus of human KEAP1. |
| Formulation: | KEAP1 Antibody is supplied in PBS containing 0.02% sodium azide. |
| Concentration: | 1ug/ul |
| Purification: | KEAP1 Antibody is affinity chromatography purified via peptide column. |
| Conjugation: | Unconjugated |
| Storage: | Store at -20°C as received. |
| Stability: | Stable for 12 months from date of receipt. |
| Predicted Protein Size: | 69 kDa |
| Gene Name: | kelch like ECH associated protein 1 |
| Database Link: | NP_987096 Entrez Gene 9817 Human Q14145 |



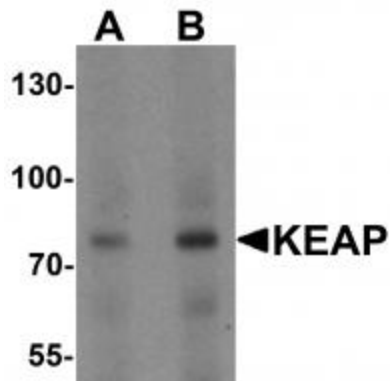
[View online »](#)

Background:

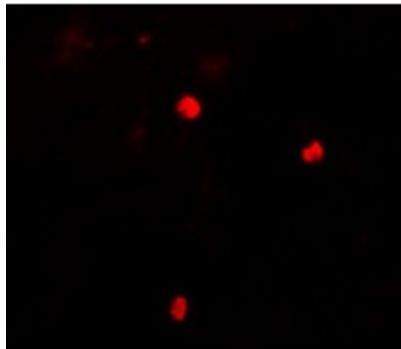
KEAP1 Antibody: KEAP1 (kelch-like ECH-associated protein 1) is a stress sensing adaptor for the Cullin3 (Cul3)-dependent E3 ubiquitin ligase complex that negatively regulates NRF2 (NF-E2-related factor 2) and plays a role in the oxidative stress response. It targets NFE2L2/NRF2 for ubiquitination and degradation by the proteasome. KEAP1 contains an amino terminal BTB/POZ domain and a carboxyl terminal KELCH domain which are required for interaction with NRF2, and in binding Cul3-E3 ubiquitin ligase. Altered expression of NRF2 is associated with chronic obstructive pulmonary disease (COPD). KEAP1 also targets the down regulation of NF- κ B activity by targeting IKK β degradation. Mutation of the KEAP1 gene is found in lung cancer.

Synonyms:

INrf2; KLHL19

Product images:

Western blot analysis of KEAP1 in human lung tissue lysate with KEAP1 antibody at (A) 1 and (B) 2 ug/mL.



Immunofluorescence of KEAP1 in human lung tissue with KEAP1 antibody at 20 ug/mL.