

## Product datasheet for **TA319787**

### **TOX1 (TOX) Rabbit Polyclonal Antibody**

#### **Product data:**

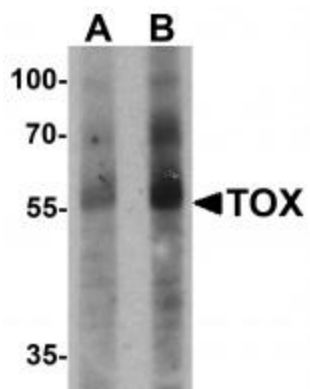
<b>Product Type:</b>	Primary Antibodies
<b>Applications:</b>	IF, WB
<b>Recommended Dilution:</b>	WB: 1 - 2 ug/mL, IF: 20 ug/mL
<b>Reactivity:</b>	Human
<b>Host:</b>	Rabbit
<b>Isotype:</b>	IgG
<b>Clonality:</b>	Polyclonal
<b>Immunogen:</b>	TOX antibody was raised against a 17 amino acid synthetic peptide near the amino terminus of human TOX.
<b>Formulation:</b>	TOX Antibody is supplied in PBS containing 0.02% sodium azide.
<b>Concentration:</b>	1ug/ul
<b>Purification:</b>	TOX Antibody is affinity chromatography purified via peptide column.
<b>Conjugation:</b>	Unconjugated
<b>Storage:</b>	Store at -20°C as received.
<b>Stability:</b>	Stable for 12 months from date of receipt.
<b>Predicted Protein Size:</b>	58 kDa
<b>Gene Name:</b>	thymocyte selection associated high mobility group box
<b>Database Link:</b>	<a href="#">NP_055544</a> <a href="#">Entrez Gene 9760 Human</a> <a href="#">O94900</a>
<b>Background:</b>	TOX Antibody: TOX (thymocyte selection-associated high mobility group (HMG) box protein) is a member of the HMG box family of DNA-binding proteins and likely plays a role in the regulation of T-cell development. It is a 526 amino acid nuclear protein and the expression of TOX is upregulated by pre-T cell receptor (pre-TCR) and TCR activation in immature thymocytes. TOX-mediated positive selection is associated with up-regulation of RUNX3 and is calcineurin dependent. TOX-dependent transition to the CD4+CD8 stage is required for development of class II major histocompatibility complex-specific T cells.
<b>Synonyms:</b>	TOX1



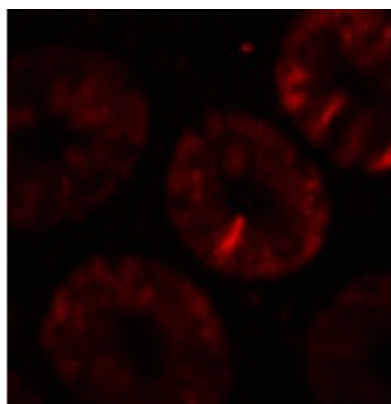
[View online »](#)

Protein Families: Transcription Factors

**Product images:**



Western blot analysis of TOX in human colon tissue lysate with TOX antibody at (A) 1 and (B) 2 ug/mL.



Immunofluorescence of TOX in human colon tissue with TOX antibody at 20 ug/mL.