

Product datasheet for **TA319786**

CP110 (CCP110) Rabbit Polyclonal Antibody

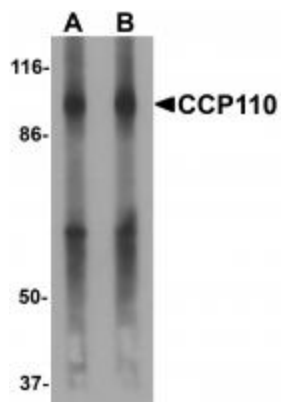
Product data:

Product Type:	Primary Antibodies
Applications:	IF, IHC, WB
Recommended Dilution:	WB: 1 - 2 ug/mL, ICC: 5 ug/mL, IF: 5 ug/mL
Reactivity:	Human, Mouse, Rat
Host:	Rabbit
Isotype:	IgG
Clonality:	Polyclonal
Immunogen:	CCP110 antibody was raised against a 17 amino acid synthetic peptide near the carboxy terminus of human CCP110.
Formulation:	CCP110 Antibody is supplied in PBS containing 0.02% sodium azide.
Purification:	CCP110 Antibody is affinity chromatography purified via peptide column.
Conjugation:	Unconjugated
Storage:	Store at -20°C as received.
Stability:	Stable for 12 months from date of receipt.
Gene Name:	centriolar coiled-coil protein 110kDa
Database Link:	NP_001185951 Entrez Gene 9738 Human O43303
Background:	CCP110 Antibody: CCP110 is a centrosomal protein required for the centrosome to function as a microtubule organizing center and plays an essential role in centrosome duplication. It is a target of cyclin-dependent kinases (CDKs); disruption of CCP110 phosphorylation leads to unscheduled centrosome separation and polyploidy. CCP110 is also a target of SCF (Cyclin F) ubiquitin ligase complex, leading to its degradation, suggesting that this complex controls centrosome homeostasis and mitotic fidelity through CCP110 degradation. The centriolar kinesin Kif24 also interacts with CP110 and remodel microtubules and regulate ciliogenesis.
Synonyms:	Cep110; CP110

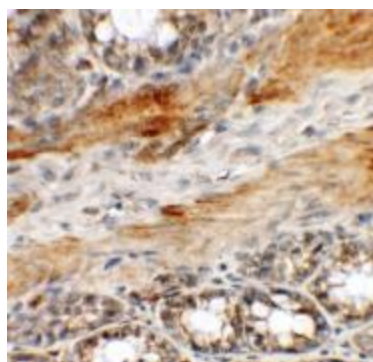


[View online »](#)

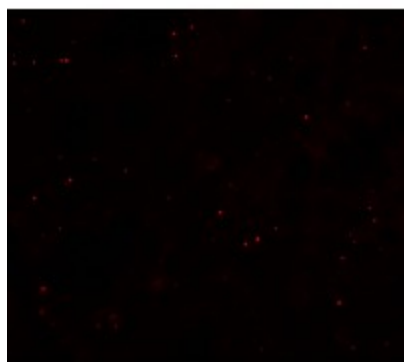
Product images:



Western blot analysis of CCP110 in human colon tissue lysate with CCP110 antibody at (A) 1 and (B) 2 ug/mL.



Immunohistochemistry of CCP110 in rat colon tissue with CCP110 antibody at 5 ug/mL.



Immunofluorescence of CCP110 in rat colon tissue with CCP110 antibody at 20 ug/mL.