

Product datasheet for **TA319784**

RIM2 (RIMS2) Rabbit Polyclonal Antibody

Product data:

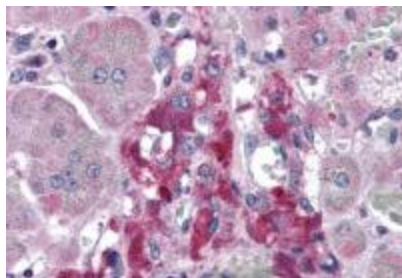
Product Type:	Primary Antibodies
Applications:	IHC
Recommended Dilution:	IHC: 5 ug/mL
Reactivity:	Human
Host:	Rabbit
Isotype:	IgG
Clonality:	Polyclonal
Immunogen:	RIM2 antibody was raised against a 16 amino acid peptide near the carboxy terminus of human RIM2.
Formulation:	RIM2 Antibody is supplied in PBS containing 0.02% sodium azide.
Concentration:	1ug/ul
Purification:	RIM2 Antibody is affinity chromatography purified via peptide column.
Conjugation:	Unconjugated
Storage:	Store at -20°C as received.
Stability:	Stable for 12 months from date of receipt.
Predicted Protein Size:	148 kDa
Gene Name:	regulating synaptic membrane exocytosis 2
Database Link:	NP_001093587 Entrez Gene 9699 Human Q9UQ26
Background:	RIM2 Antibody: Rab3-interacting molecules (RIMs) are synaptic proteins necessary for neuronal transmission and plasticity. RIM1 and RIM2 proteins are expressed in overlapping but distinct patterns throughout the brain. While the ablation of either gene was not lethal in mice, the deletion of both resulted in postnatal mortality. This lethality is due to a defect in neurotransmitter release; synapses without RIM proteins can still release neurotransmitters but are unable to do so in response to normal Ca ²⁺ triggers. Like RIM1, RIM2 is thought to be an effector protein for Rab3, binding to Rab3 on synaptic vesicles in a GTP-dependent manner.



[View online »](#)

Synonyms: OBOE; RAB3IP3; RIM2

Product images:



Immunohistochemistry of RIM2 in adrenal gland tissue with RIM2 antibody at 5 ug/mL.