

Product datasheet for **TA319783**

N4BP1 Rabbit Polyclonal Antibody

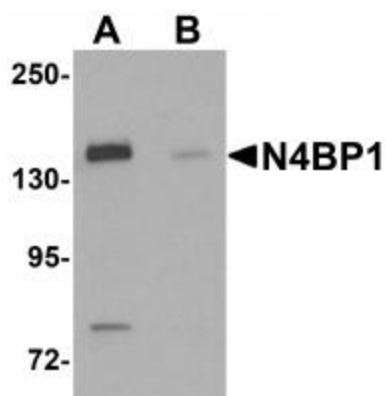
Product data:

Product Type:	Primary Antibodies
Applications:	IF, WB
Recommended Dilution:	WB: 0.5 ug/mL, ICC: 10 ug/mL, IF: 20 ug/mL
Reactivity:	Human, Mouse, Rat
Host:	Rabbit
Isotype:	IgG
Clonality:	Polyclonal
Immunogen:	N4BP1 antibody was raised against a 18 amino acid synthetic peptide near the amino terminus of human N4BP1.
Formulation:	N4BP1 Antibody is supplied in PBS containing 0.02% sodium azide.
Concentration:	1ug/ul
Purification:	N4BP1 Antibody is affinity chromatography purified via peptide column.
Conjugation:	Unconjugated
Storage:	Store at -20°C as received.
Stability:	Stable for 12 months from date of receipt.
Gene Name:	NEDD4 binding protein 1
Database Link:	NP_694574 Entrez Gene 80750 Mouse Entrez Gene 291921 Rat Entrez Gene 9683 Human O75113
Background:	N4BP1 Antibody: Nedd4-binding partner-1 (N4BP1) is a developmentally expressed protein interactor and monoubiquitylation substrate of Nedd4, a HECT domain-containing ubiquitin ligase that mediates ubiquitylation and proteasome degradation of target proteins and may have a fundamental role to play in embryonic processes. N4BP1 can undergo Nedd4-mediated polyubiquitylation and proteosomal degradation. N4BP1 also functions as a negative regulator of AIF4 (also known as ITCH or Atrophin-1), an E3-ubiquitin ligase, by interacting with the second WW domain of AIF4 and impairing ubiquitination of substrates.
Synonyms:	FLJ31821; KIAA0615; MGC176730

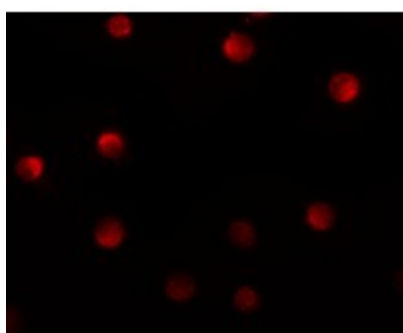


[View online »](#)

Product images:



Western blot analysis of N4BP1 in HeLa cell lysate with N4BP1 antibody at 0.5 ug/mL in (A) the absence and (B) the presence of blocking peptide.



Immunofluorescence of N4BP1 in HeLa cells with N4BP1 antibody at 20 ug/mL.



Immunocytochemistry of N4BP1 in HeLa cells with N4BP1 antibody at 10 ug/mL.