

Product datasheet for **TA319782**

EI24 Rabbit Polyclonal Antibody

Product data:

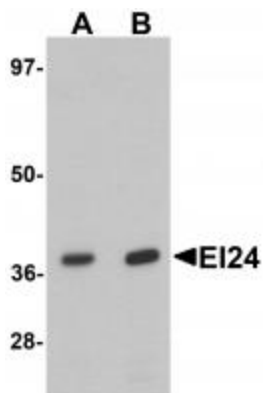
Product Type:	Primary Antibodies
Applications:	IHC, WB
Recommended Dilution:	WB: 1 - 2 ug/mL, ICC: 5 ug/mL
Reactivity:	Human, Mouse, Rat
Host:	Rabbit
Isotype:	IgG
Clonality:	Polyclonal
Immunogen:	EI24 antibody was raised against a 19 amino acid synthetic peptide near the carboxy terminus of human EI24.
Formulation:	EI24 Antibody is supplied in PBS containing 0.02% sodium azide.
Concentration:	1ug/ul
Purification:	EI24 Antibody is affinity chromatography purified via peptide column.
Conjugation:	Unconjugated
Storage:	Store at -20°C as received.
Stability:	Stable for 12 months from date of receipt.
Gene Name:	EI24, autophagy associated transmembrane protein
Database Link:	NP_004870 Entrez Gene 13663 Mouse Entrez Gene 300514 Rat Entrez Gene 9538 Human Q14681
Background:	EI24 Antibody: The etoposide-induced 24 (EI24) protein is an immediate-early induction target of p53-mediated apoptosis and functions as a tumor suppressor. EI24 contains six transmembrane domains and is localized to the endoplasmic reticulum (ER). It binds to Bcl-2 and may contribute to apoptosis by modulating the activity and function of Bcl-2. EI24 is highly mutated in aggressive breast cancers and its loss in breast cancer tissue correlates with tumor invasiveness. Similar findings in invasive cervical carcinoma suggest that EI24 may be a promising therapeutic target in the treatment of invasive cancer.
Synonyms:	EPG4; PIG8; TP53I8
Protein Families:	Druggable Genome, Transmembrane



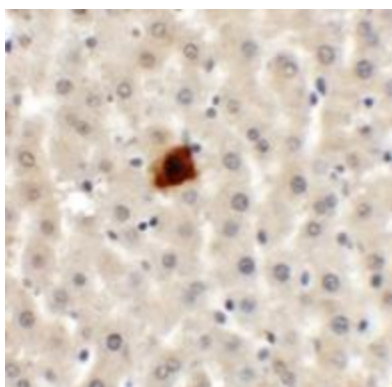
[View online »](#)

Protein Pathways: p53 signaling pathway

Product images:



Western blot analysis of EI24 in rat liver tissue lysate with EI24 antibody at (A) 1 and (B) 2 ug/mL.



Immunohistochemistry of EI24 in rat liver tissue with EI24 antibody at 5 ug/mL.