

Product datasheet for **TA319780**

Serine Palmitoyltransferase (SPTLC2) Rabbit Polyclonal Antibody

Product data:

Product Type:	Primary Antibodies
Applications:	IF, WB
Recommended Dilution:	WB: 1 ug/mL, ICC: 10 ug/mL, IF: 20 ug/mL
Reactivity:	Human, Mouse, Rat
Host:	Rabbit
Isotype:	IgG
Clonality:	Polyclonal
Immunogen:	SPT2 antibody was raised against a 15 amino acid synthetic peptide near the carboxy terminus of human SPT2.
Formulation:	SPT2 Antibody is supplied in PBS containing 0.02% sodium azide.
Concentration:	1ug/ul
Purification:	SPT2 Antibody is affinity chromatography purified via peptide column.
Conjugation:	Unconjugated
Storage:	Store at -20°C as received.
Stability:	Stable for 12 months from date of receipt.
Gene Name:	serine palmitoyltransferase long chain base subunit 2
Database Link:	NP_004854 Entrez Gene 20773 Mouse Entrez Gene 366697 Rat Entrez Gene 9517 Human O15270

Background: SPT2 Antibody: Serine palmitoyltransferase (SPT), which consists of two different subunits, is the key enzyme in sphingolipid biosynthesis. It converts L-serine and palmitoyl-CoA to 3-oxosphinganine with pyridoxal 5'-phosphate as a cofactor. SPT2 is the long chain base subunit 2 of mammalian serine palmitoyltransferase. SPT2 is catalytically active but needs its related protein SPT1 for its stabilization and anchoring the holoenzyme to the cytosolic face of the endoplasmic reticulum. As in the case with SPT1, mutations in the SPT2 gene can cause hereditary sensory and autonomic neuropathy type I (HSAN-I), resulting from a loss of SPT activity as well as the accumulation of the atypical and neurotoxic sphingoid metabolite 1-deoxy-sphinganine.

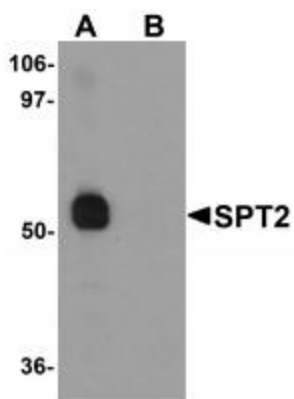


[View online »](#)

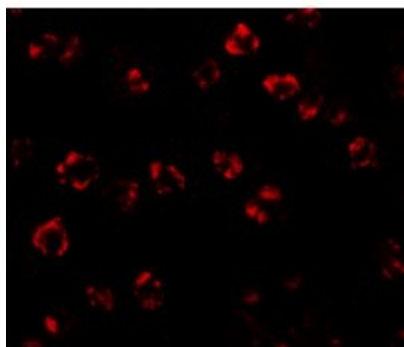
Synonyms: hLCB2a; HSN1C; LCB2; LCB2A; NSAN1C; SPT2

Protein Pathways: Metabolic pathways, Sphingolipid metabolism

Product images:



Western blot analysis of SPT2 in 3T3 cell lysate with SPT2 antibody at 1 ug/mL in (A) the absence and (B) the presence of blocking peptide.



Immunofluorescence of SPT2 in 3T3 cells with SPT2 antibody at 20 ug/mL.



Immunocytochemistry of SPT2 in 3T3 cells with SPT2 antibody at 10 ug/mL.