

Product datasheet for **TA319779**

ROCK2 Rabbit Polyclonal Antibody

Product data:

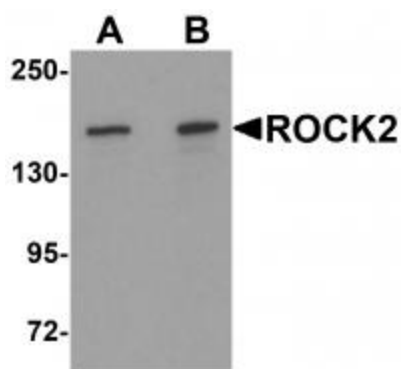
Product Type:	Primary Antibodies
Applications:	IF, IHC, WB
Recommended Dilution:	WB: 1 - 2 ug/mL, ICC: 5 ug/mL, IF: 20 ug/mL
Reactivity:	Human, Mouse, Rat
Host:	Rabbit
Isotype:	IgG
Clonality:	Polyclonal
Immunogen:	ROCK2 antibody was raised against a 15 amino acid synthetic peptide near the center of human ROCK2.
Formulation:	ROCK2 Antibody is supplied in PBS containing 0.02% sodium azide.
Concentration:	1ug/ul
Purification:	ROCK2 Antibody is affinity chromatography purified via peptide column.
Conjugation:	Unconjugated
Storage:	Store at -20°C as received.
Stability:	Stable for 12 months from date of receipt.
Gene Name:	Rho associated coiled-coil containing protein kinase 2
Database Link:	NP_004841 Entrez Gene 19878 Mouse Entrez Gene 25537 Rat Entrez Gene 9475 Human O75116
Background:	ROCK2 Antibody: ROCK2 is a member of the AGC serine/threonine protein kinase family that regulates the assembly of the actin cytoskeleton. ROCK2 contains a protein kinase domain, a coiled-coil region and a zinc finger region and appears to be present as a dimer. ROCK2, like its isozyme ROCK1, is a downstream target of the small G-protein Rho and plays a role in smooth muscle contraction, malignant cell transformation, tumor invasion and metastasis, and mediates the cellular morphological changes during apoptosis.
Synonyms:	ROCK-II
Protein Families:	Druggable Genome, Protein Kinase



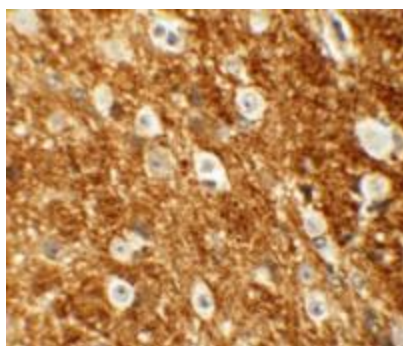
[View online »](#)

Protein Pathways:

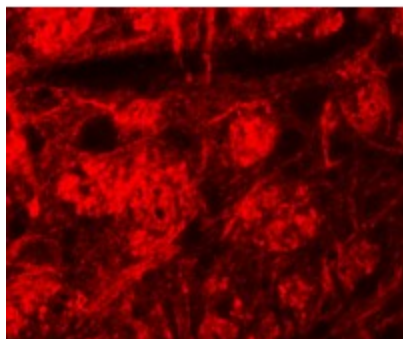
Axon guidance, Chemokine signaling pathway, Focal adhesion, Leukocyte transendothelial migration, Pathogenic Escherichia coli infection, Regulation of actin cytoskeleton, TGF-beta signaling pathway, Vascular smooth muscle contraction, Wnt signaling pathway

Product images:

Western blot analysis of ROCK2 in mouse brain tissue lysate with ROCK2 antibody at (A) 1 and (B) 2 ug/mL



Immunohistochemistry of ROCK2 in mouse brain tissue with ROCK2 antibody at 5 ug/mL.



Immunofluorescence of ROCK2 in mouse brain tissue with ROCK2 antibody at 20 ug/mL.