

Product datasheet for **TA319778**

Klotho (KL) Rabbit Polyclonal Antibody

Product data:

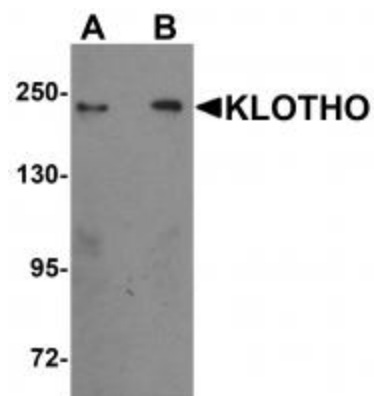
Product Type:	Primary Antibodies
Applications:	IF, IHC, WB
Recommended Dilution:	WB: 1 - 2 ug/mL, ICC: 2.5 ug/mL, IF: 20 ug/mL
Reactivity:	Human, Mouse, Rat
Host:	Rabbit
Isotype:	IgG
Clonality:	Polyclonal
Immunogen:	KLOTHO antibody was raised against a 16 amino acid synthetic peptide near the center of human KLOTHO.
Formulation:	KLOTHO Antibody is supplied in PBS containing 0.02% sodium azide.
Concentration:	1 mg/ml
Purification:	KLOTHO Antibody is affinity chromatography purified via peptide column.
Conjugation:	Unconjugated
Storage:	Store at -20°C as received.
Stability:	Stable for 12 months from date of receipt.
Gene Name:	klotho
Database Link:	NP_004786 Entrez Gene 16591 Mouse Entrez Gene 83504 Rat Entrez Gene 9365 Human Q9UEF7
Background:	KLOTHO Antibody: KLOTHO is the systemic anti-aging hormone within the glycosidase1 superfamily. It encodes a type I membrane protein that is abundant in the kidney and brain. In mice, a deficiency in KLOTHO expression leads to various systemic phenotypes resembling human aging such as arteriosclerosis, osteoporosis, and skin atrophy together with growth retardation, short life-span and infertility. Transgenic mice overexpressing KLOTHO have an extended life span by inhibiting insulin/IGF1 signaling. KLOTHO is involved in the regulation of calcium/phosphorus homeostasis by inhibiting the synthesis of active vitamin D and identified as a potential tumor suppressor.
Synonyms:	klotho; OTTHUMP00000018796



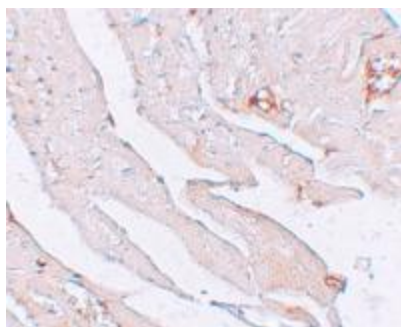
[View online »](#)

Protein Families: Secreted Protein, Transmembrane

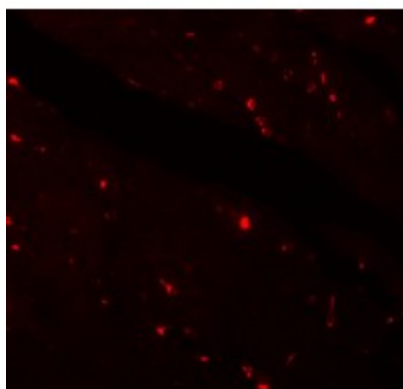
Product images:



Western blot analysis of KLOTHO in rat heart tissue lysate with KLOTHO antibody at (A) 1 and (B) 2 $\mu\text{g}/\text{mL}$.



Immunohistochemistry of KLOTHO in mouse heart tissue with KLOTHO antibody at 2.5 $\mu\text{g}/\text{mL}$.



Immunofluorescence of KLOTHO in mouse heart tissue with KLOTHO antibody at 20 $\mu\text{g}/\text{mL}$.