

## Product datasheet for **TA319774**

### **BMP15 Rabbit Polyclonal Antibody**

#### **Product data:**

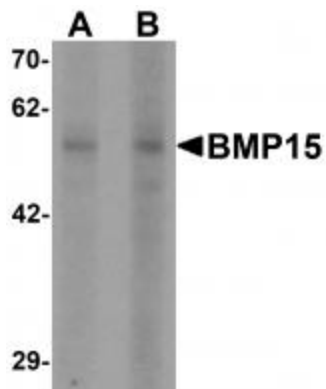
Product Type:	Primary Antibodies
Applications:	IF, WB
Recommended Dilution:	WB: 1 - 2 ug/mL
Reactivity:	Human, Mouse
Host:	Rabbit
Isotype:	IgG
Clonality:	Polyclonal
Immunogen:	BMP15 antibody was raised against a 16 amino acid synthetic peptide near the amino terminus of human BMP15.
Formulation:	BMP15 Antibody is supplied in PBS containing 0.02% sodium azide.
Concentration:	1ug/ul
Purification:	BMP15 Antibody is affinity chromatography purified via peptide column.
Conjugation:	Unconjugated
Storage:	Store at -20°C as received.
Stability:	Stable for 12 months from date of receipt.
Gene Name:	bone morphogenetic protein 15
Database Link:	<a href="#">NP_005439</a> <a href="#">Entrez Gene 12155 Mouse</a> <a href="#">Entrez Gene 9210 Human</a> <a href="#">O95972</a>
Background:	BMP15 Antibody: BMP15, or GDF9B is a member of the bone morphogenetic protein family which is part of the transforming growth factor-beta superfamily that are involved in embryonic development and adult tissue homeostasis. BMP15 is expressed exclusively in the oocyte. It is an oocyte-specific growth/differentiation factor that may be involved in oocyte maturation and follicular development. Defects in BMP15 are the cause of ovarian dysgenesis type 2. BMP15 could be used as an oogenesis marker to track human amniotic fluid stem cells differentiation into the oocyte-like cells.
Synonyms:	GDF9B; ODG2; POF4



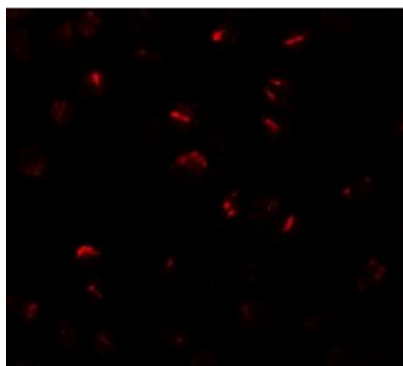
[View online »](#)

**Protein Families:** Adult stem cells, Cancer stem cells, Druggable Genome, Embryonic stem cells, ES Cell Differentiation/IPS, Secreted Protein, Stem cell relevant signaling - TGFb/BMP signaling pathway

**Product images:**



Western blot analysis of BMP15 in 3T3 cell lysate with BMP15 antibody at (A) 1 and (B) 2 ug/ml



Immunofluorescence of BMP15 in 3T3 cells with BMP15 antibody at 20 ug/mL.



Immunocytochemistry of BMP15 in 3T3 cells with BMP15 antibody at 2.5 ug/mL.