

Product datasheet for **TA319771**

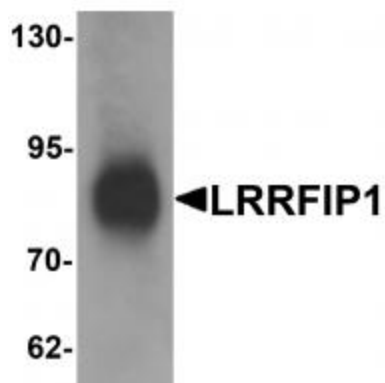
LRRFIP1 Rabbit Polyclonal Antibody

Product data:

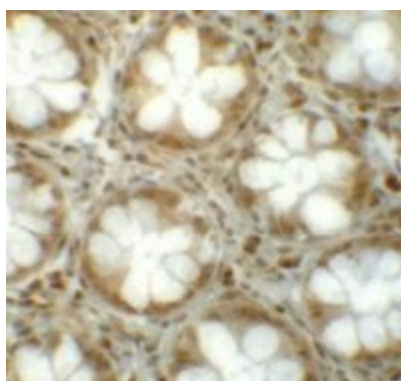
Product Type:	Primary Antibodies
Applications:	IF, IHC, WB
Recommended Dilution:	WB: 1 ug/mL, ICC: 5 ug/mL, IF: 20 ug/mL
Reactivity:	Human
Host:	Rabbit
Isotype:	IgG
Clonality:	Polyclonal
Immunogen:	LRRFIP1 antibody was raised against a 19 amino acid synthetic peptide near the carboxy terminus of human LRRFIP1.
Formulation:	LRRFIP1 Antibody is supplied in PBS containing 0.02% sodium azide.
Concentration:	1ug/ul
Purification:	LRRFIP1 Antibody is affinity chromatography purified via peptide column.
Conjugation:	Unconjugated
Storage:	Store at -20°C as received.
Stability:	Stable for 12 months from date of receipt.
Gene Name:	leucine rich repeat (in FLII) interacting protein 1
Database Link:	NP_001131024 Entrez Gene 9208 Human Q32MZ4
Background:	LRRFIP1 Antibody: LRRFIP1, also known as GC-binding factor 2 (GCF2), is a 738 amino acid transcriptional repressor that mainly plays a cytoskeletal role. It is primarily localized in the cytoplasm and preferentially binds to GC-rich dsDNA, but will also bind directly to dsRNA as well. The RNA binding domain encompasses a lysine-rich motif. LRRFIP1 interacts with the mammalian Flightless I (Fli-I) and is a key component in the cytoskeletal regulation of platelet function. LRRFIP1 and the related protein LRRFIP2 may modulate canonical WNT signaling and mediate the IRF3-induced production of type I interferon via a beta-catenin-dependent pathway.
Synonyms:	FLAP-1; FLAP1; FLIIAP1; GCF-2; GCF2; HUFI-1; TRIP



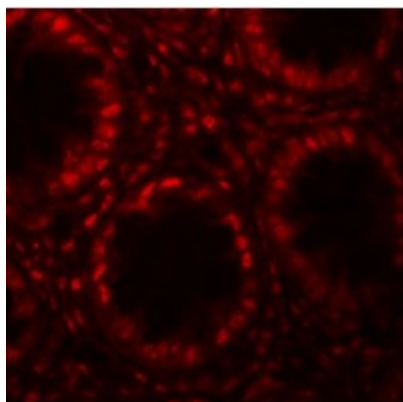
[View online »](#)

Product images:

Western blot analysis of LRRFIP1 in human colon tissue lysate with LRRFIP1 antibody at 1 ug/mL.



Immunohistochemistry of LRRFIP1 in human colon tissue with LRRFIP1 antibody at 5 ug/mL.



Immunofluorescence of LRRFIP1 in human colon tissue with LRRFIP1 antibody at 20 ug/mL.