

Product datasheet for **TA319766**

PRC1 Rabbit Polyclonal Antibody

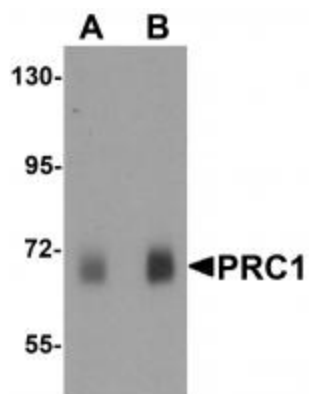
Product data:

Product Type:	Primary Antibodies
Applications:	IF, IHC, WB
Recommended Dilution:	WB: 0.5 - 1 ug/mL, ICC: 2.5 ug/mL
Reactivity:	Human, Mouse, Rat
Host:	Rabbit
Isotype:	IgG
Clonality:	Polyclonal
Immunogen:	PRC1 antibody was raised against a 19 amino acid synthetic peptide near the center of human PRC1.
Formulation:	PRC1 Antibody is supplied in PBS containing 0.02% sodium azide.
Concentration:	1ug/ul
Purification:	PRC1 Antibody is affinity chromatography purified via peptide column.
Conjugation:	Unconjugated
Storage:	Store at -20°C as received.
Stability:	Stable for 12 months from date of receipt.
Gene Name:	protein regulator of cytokinesis 1
Database Link:	NP_003972 Entrez Gene 9055 Human O43663
Background:	PRC1 Antibody: PRC1 (Protein Regulator of Cytokinesis 1) is a key regulator of cytokinesis and has been identified as a substrate for several cyclin-dependent kinases (CDKs). High levels of PRC1 expression occurs during S and G2/M and drops dramatically after mitosis exit and G1 entry. It is located in the nucleus during interphase and binds to the midzone of mitotic spindles during anaphase and is localized to the cell midbody during cytokinesis. Depletion of PRC1 has been shown to prevent cellular cleavage, but it has no effect on nuclear division, demonstrating the importance of PRC1 in mitosis.
Synonyms:	ASE1



[View online »](#)

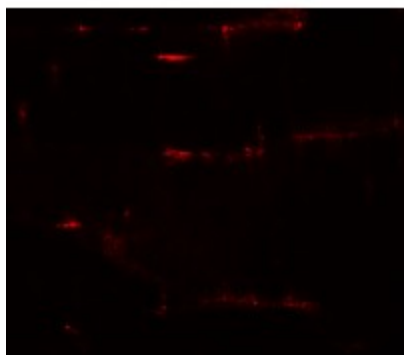
Product images:



Western blot analysis of PRC1 in human skeletal muscle tissue lysate with Prc1 antibody at (A) 0.5 ug/ml and (B) 1 ug/mL.



Immunohistochemistry of PRC1 in mouse skeletal muscle tissue with PRC1 antibody at 2.5 ug/mL.



Immunofluorescence of PRC1 in mouse skeletal muscle tissue with PRC1 antibody at 20 ug/mL.